

Midlands Sustainable Sugar Supply Chain Collaboration



On a chilly morning in mid-June, a number of sugar industry members met at the Illovo Sugar Noodsberg Country Club with members of WWF, SABMiller and Solidaridad. The purpose of the meeting was to concrete an already established collaboration whose main aim is to promote sustainable sugarcane supply chains and support the implementation of SUSFARMS® in the Midlands and thereafter in the other regions.

The collaboration, known as the Midlands Sustainable Sugar Supply Chain Collaboration has a number of participants.

THESE INCLUDE:

- Local millers and growers (Illovo Sugar South Africa, Noodsberg; UCL Company (Pty) Ltd and Illovo Sugar South Africa, Eston)
- Illovo Sugar Ltd
- Noodsberg Canegrowers
- SA Canegrowers
- SASA/SASRI
- SABMiller (Largest Coca-Cola bottler in southern Africa, also representing and in alignment with the broader Coca-Cola system)
- Solidaridad
- WWF

While the collaboration is being co-ordinated by WWF-SA, initial discussions arose out of Coca-Cola's and SAB Miller's 2020 vision for sustainable sugar sourcing. Since SABMiller manufactures and distributes the largest volume of Coca-Cola's products in South Africa through ABI (Amalgamated Beverage Industries), it therefore takes the lead in Coca-Cola's sugar procurement in South Africa. Given the strong relationship and alignment between SABMiller's and Coca-Cola's sustainability agenda, SABMiller is taking the lead on behalf of the Coca-Cola System with regards to SUSFARMS® and the Midlands region.

SABMiller are fully supportive of the sugar industry's Sustainable Sugarcane Farm Management System, SUSFARMS® and have suggested that it be used as a vehicle for Midlands growers to contribute to the achievement of these 2020 targets for sustainable sugar sourcing.

The Midlands region, led by the Noodsberg Canegrowers in conjunction with UCL Company (Pty) Ltd, are leaders in sustainability practices in the South African sugar industry and initiated the development of SUSFARMS® over a decade ago in partnership with WWF. SUSFARMS® is a farming system designed to encourage sustainable sugarcane production through the implementation of better management practices (BMPs). These BMPs are designed to reduce negative impacts on the environment, comply with legislation,

maintain a high level of social responsibility and assist in ensuring financial sustainability.

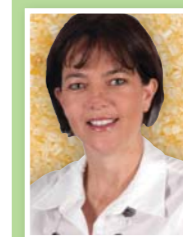
Since all members in this collaborative group are committed to an open, participatory process, the workshop resulted in the development of a well-articulated action plan of a number of complimentary projects and activities. Each of these projects will contribute to the achievement of the main aims and objectives of the collaboration.

THESE OBJECTIVES INCLUDE:

- Setting local sustainability targets for 2018.
- The strengthening of support systems and learning opportunities to enable the implementation of best management practices.
- The further implementation of sustainable sugarcane farming practices in the Midlands region through more effective data management.
- Regular development of SUSFARMS® through alignment with other related standards and initiatives.
- The development of a verification tool and suitable metrics.
- Customising SUSFARMS® for small-scale growers.

Through working together, the Midlands Region and Illovo Sugar South Africa Ltd is confident that they will succeed in supporting their customer's 2020 visions while facilitating the rapid adoption and implementation of better management practices through SUSFARMS®.

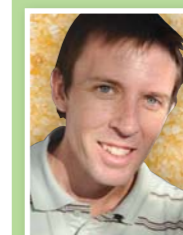
FROM LEFT TO RIGHT : Guy Shange, Michelle Binedell, Bruno Eggers, Vaughan Koopman, Gabriel Guzman, Ant Edmonds, Geoff Maher, Gregg Cheetham, Ndumiso Sithole, Anna Swaithe, Money Thusi, Annie Sugrue, Michela Cutts, Lotar Schulz, Gavin van Schoor, Mziwakhe Mbasela, David Wilkinson, Shaun Ramsunder, Craig Breedtzke, Mally Stainbank, Jessica Cockburn, Paul Botha, Edgar Brüggemann, Eddie Padayachee, Eckard Lucht, Julius de Lange and Fanie Horn.



Michelle Binedell
Knowledge Manager
South African Sugarcane
Research Institute



Jessica Cockburn
Sugar Project Support
WWF-SA Sustainable Agriculture



Vaughan Koopman
Project Manager
WWF-SA Mondi Wetlands
Programme