

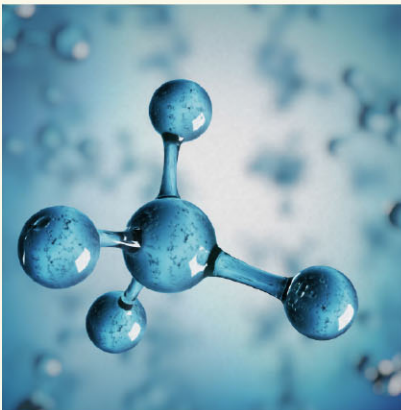
Get your copy of the latest Link!



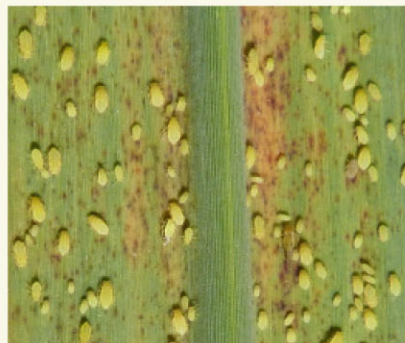
The latest edition of The Link has just been published. This magazine is usually published four times a year and is a collection of the latest sugarcane agriculture research findings, seasonal farming recommendations and updates on new SASRI technologies in the sugar industry. You can download The Link from the SASRI website (www.sasri.org.za) or pick up a printed copy from your nearest Extension Office. Alternatively, if you are on our mailing list, you will receive The Link in your post-box.

What's in this issue?

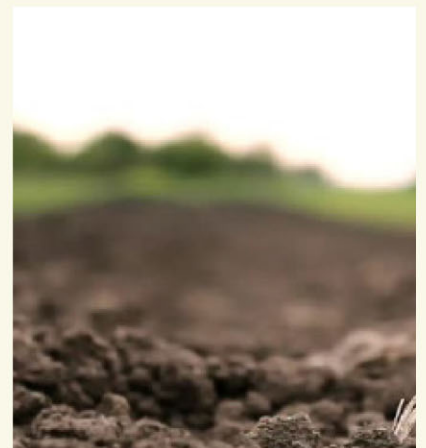
This edition we take a closer look at Nitrogen application. This nutrient is essential for growth and sucrose production, however, it can be prone to losses in the soil. Without proper management, nitrogen use efficiency is reduced resulting in the grower incurring more costs to reapply nitrogen to the soil.



Read up on the latest scouting advice for the elusive pest, Yellow Sugarcane Aphid (YSA). This year, we saw one of the worst outbreaks of YSA that resulted in yield loss. With the onset of warmer weather, this pest is expected to infest fields once again. Growers therefore need to be on high alert, especially on fields with susceptible varieties between 2-7 months of age. Scouting for this pest must begin before visible symptoms appear.



Compaction of soil is one of the most common issues in the industry. Identifying and managing this phenomenon is key to reducing significant yield losses as well as understand its role in yield decline. This edition, our soil experts weigh in on compaction and give us all the dirt on how to deal with this problem.



 Kerisha Raghunandan
(SASRI Publications Officer)