



Information Sheet

Variety N55

Introduction

Recommended for coastal and hinterland conditions on a range of soil types and harvest ages (12 - 18 months).

Best features

Good pest and disease resistance. Suited to wide range of soil types and harvest ages. Performs particularly well on high potential soils. Very good RV content when harvested at 12 months of age. Average stalk population of thick stalks. Initial observations are that thrips will cause mild damage in this variety.

Limiting features

Poor germination under some conditions, sensitive to hot water treatment. Avoid planting on low potential soils.

Yield & quality



The performance of a variety will vary under different conditions and levels of management. For refined yield and quality information, please consult the SASRI Variety Guide at www.sasri.org.za/varietyguide, where you will be able to rank this variety against others of your choice based on your specific area, irrigation regime, cutting cycle, soil potential and time of harvest.

Management Factors

EARLY SEASON HARVEST	YES	NO	
MID-SEASON HARVEST	YES	NO	
LATE SEASON HARVEST	YES	NO	
SUITABILITY FOR CARRYOVER	YES	NO	
SUITABILITY FOR FROST POCKETS	YES	NO	UNKNOWN

Soil Potential

LOW POTENTIAL	YES	NO
AVERAGE POTENTIAL	YES	NO
HIGH POTENTIAL	YES	NO

Agronomic Characteristics

GERMINATION ABILITY	FAST	MODERATE	SLOW	
CANOPY DEVELOPMENT	FAST	MODERATE	SLOW	
STALK POPULATION	HIGH	MODERATE	LOW	
STALK HEIGHT	TALL	MODERATE	SHORT	
FLOWERING	SPARSE	MODERATE	PROFUSE	
LODGING	ERECT	AVERAGE	SEVERE	
TOLERANCE TO WATER STRESS	GOOD	MODERATE	POOR	UNKNOWN
TOLERANCE TO WATER LOGGING	GOOD	MODERATE	POOR	UNKNOWN

Response to Ripeners

ETHEPHON (and generics)	HIGHLY RECOMMENDED	RECOMMENDED	NOT RECOMMENDED	UNKNOWN
FUSILADE (and generics)	HIGHLY RECOMMENDED	RECOMMENDED	NOT RECOMMENDED	UNKNOWN
COMBO ETHEPHON + FUSILADE (and generics)	HIGHLY RECOMMENDED	RECOMMENDED	NOT RECOMMENDED	UNKNOWN
MODDUS	HIGHLY RECOMMENDED	RECOMMENDED	NOT RECOMMENDED	UNKNOWN
COMBO MODDUS + FUSILADE (and generics)	HIGHLY RECOMMENDED	RECOMMENDED	NOT RECOMMENDED	UNKNOWN

Reaction to Pests & Diseases

SMUT	HIGHLY RESISTANT	RESISTANT	INTERMEDIATE RESISTANT	INTERMEDIATE	INTERMEDIATE SUSCEPTIBLE	SUSCEPTIBLE	HIGHLY SUSCEPTIBLE	
MOSAIC	HIGHLY RESISTANT	RESISTANT	INTERMEDIATE RESISTANT	INTERMEDIATE	INTERMEDIATE SUSCEPTIBLE	SUSCEPTIBLE	HIGHLY SUSCEPTIBLE	
BROWN RUST	HIGHLY RESISTANT	RESISTANT	INTERMEDIATE RESISTANT	INTERMEDIATE	INTERMEDIATE SUSCEPTIBLE	SUSCEPTIBLE	HIGHLY SUSCEPTIBLE	UNKNOWN
TAWNY RUST	HIGHLY RESISTANT	RESISTANT	INTERMEDIATE RESISTANT	INTERMEDIATE	INTERMEDIATE SUSCEPTIBLE	SUSCEPTIBLE	HIGHLY SUSCEPTIBLE	UNKNOWN
ELDANA	HIGHLY RESISTANT	RESISTANT	INTERMEDIATE RESISTANT	INTERMEDIATE	INTERMEDIATE SUSCEPTIBLE	SUSCEPTIBLE	HIGHLY SUSCEPTIBLE	
THRIPS LEAF DAMAGE	LESS	MODERATE	MORE	UNKNOWN				
YSA LEAF DAMAGE	LESS	MODERATE	MORE	UNKNOWN				

Milling Characteristics

FIBRE CONTENT	VERY LOW	LOW	LOW TO MOD	MODERATE	MOD TO HIGH	HIGH	VERY HIGH
COLOUR	VERY LOW	LOW	ACCEPTABLE	HIGH	VERY HIGH		
PROCESSABILITY	VERY GOOD	GOOD	ACCEPTABLE	POOR	VERY POOR	UNKNOWN	

N55 Identification Guide

Habit and General Appearance

N55 is an average population variety with medium to thin stalks, with an erect growing habit. The canopy is uniform and good, the leaves are of medium to narrow width and erect with a slight bend near the tip of the leaf.

Leaf

Blade: Green; medium to narrow width. Chlorotic blotches present around the midrib. Overlapping leaf absent.

Sheath: Green sheath with red blotches sometimes present. Abundant, long and soft hairs (that rubs off easily) are present on the unexposed parts of the sheath.

Collar: Not prominent, Yellow-green collar.

Auricle: Under-lapping; medium-sized, deltoid

Stalk

Internode

Appearance: The internodes are long and cylindrical. They are yellow-green in colour and slightly greener where exposed with sooty black patches. The wax band is not restricted and there is abundant wax bloom over most of the internode. The stalks have a slight zigzag alignment.

Wax band: Narrow, not well defined.

Bud furrow: None.

Node

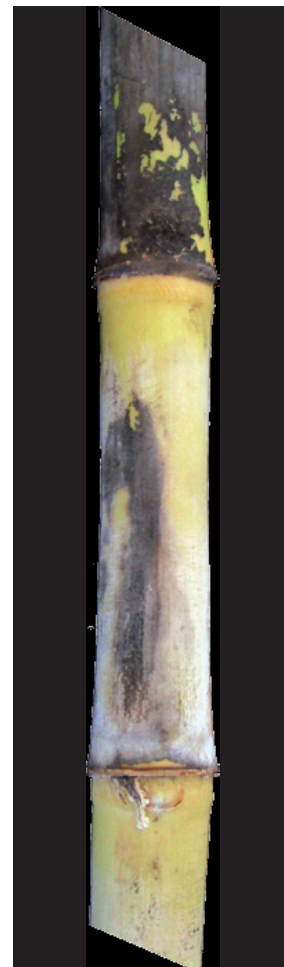
Growth ring: Medium width, slightly darker colour than internode; raised.

Root band: Quite narrow, same colour as stalk; 2 rows of (distinct) root primordia.

Sheath scar: Straight, untidy.

Bud: Round and small to medium size.

Flange: Quite broad, around the top half of the bud.



January 2024

All copyright and other intellectual property rights subsisting in this work, including without limitation all text, images and graphics contained in this work (collectively, the "Contents") are owned by the South African Sugar Association ("the Owner"). Neither this work nor any of its Contents may be shared, modified or copied in whole or part in any form, or be used to create any derivative work without the owner's prior written permission. Whilst every effort has been made to ensure that the information contained in this work is accurate, the owner makes no representation, warranty or guarantee relating to the information contained in this work. The use of this work is at your own risk and neither the Owner nor its consultants or staff can be held liable for any loss or damage, whether direct or indirect, caused by the reliance on the information contained in this work. The use of proprietary names should not be considered as an endorsement for their use.