



# Information Sheet

## Variety N72

### Introduction

Recommended for planting in average and high potential soils on a shorter cutting cycle of 12 to 14 months in the coastal rainfed regions.

### Best features

Recommended for planting in coastal rainfed regions on average to high potential soils and an annual harvesting cycle. High RV yields on average and high potential soils. Suitable for an annual harvesting cycle. Good resistance to smut, mosaic, rust and eldana. Good ratooning ability.

### Limiting features

Higher colour than NCo376.

### Yield & quality



The performance of a variety will vary under different conditions and levels of management. For refined yield and quality information, please consult the SASRI Variety Guide at [www.sasri.org.za/varietyguide](http://www.sasri.org.za/varietyguide), where you will be able to rank this variety against others of your choice based on your specific area, irrigation regime, cutting cycle, soil potential and time of harvest.



Management Factors

EARLY SEASON HARVEST	YES	NO	
MID-SEASON HARVEST	YES	NO	
LATE SEASON HARVEST	YES	NO	
SUITABILITY FOR CARRYOVER	YES	NO	
SUITABILITY FOR FROST POCKETS	YES	NO	UNKNOWN



Soil Potential

LOW POTENTIAL	YES	NO
AVERAGE POTENTIAL	YES	NO
HIGH POTENTIAL	YES	NO



Agronomic Characteristics

GERMINATION ABILITY	FAST	MODERATE	SLOW	
CANOPY DEVELOPMENT	FAST	MODERATE	SLOW	
STALK POPULATION	HIGH	MODERATE	LOW	
STALK HEIGHT	TALL	MODERATE	SHORT	
FLOWERING	SPARSE	MODERATE	PROFUSE	
LODGING	ERECT	AVERAGE	SEVERE	
TOLERANCE TO WATER STRESS	GOOD	MODERATE	POOR	UNKNOWN
TOLERANCE TO WATER LOGGING	GOOD	MODERATE	POOR	UNKNOWN



Response to Ripeners

ETHEPHON (and generics)	HIGHLY RECOMMENDED	RECOMMENDED	NOT RECOMMENDED	UNKNOWN
FUSILADE (and generics)	HIGHLY RECOMMENDED	RECOMMENDED	NOT RECOMMENDED	UNKNOWN
COMBO ETHEPHON + FUSILADE (and generics)	HIGHLY RECOMMENDED	RECOMMENDED	NOT RECOMMENDED	UNKNOWN
MODDUS	HIGHLY RECOMMENDED	RECOMMENDED	NOT RECOMMENDED	UNKNOWN
COMBO MODDUS + FUSILADE (and generics)	HIGHLY RECOMMENDED	RECOMMENDED	NOT RECOMMENDED	UNKNOWN



Reaction to Pests & Diseases

SMUT	HIGHLY RESISTANT	RESISTANT	INTERMEDIATE RESISTANT	INTERMEDIATE	INTERMEDIATE SUSCEPTIBLE	SUSCEPTIBLE	HIGHLY SUSCEPTIBLE	
MOSAIC	HIGHLY RESISTANT	RESISTANT	INTERMEDIATE RESISTANT	INTERMEDIATE	INTERMEDIATE SUSCEPTIBLE	SUSCEPTIBLE	HIGHLY SUSCEPTIBLE	
BROWN RUST	HIGHLY RESISTANT	RESISTANT	INTERMEDIATE RESISTANT	INTERMEDIATE	INTERMEDIATE SUSCEPTIBLE	SUSCEPTIBLE	HIGHLY SUSCEPTIBLE	UNKNOWN
TAWNY RUST	HIGHLY RESISTANT	RESISTANT	INTERMEDIATE RESISTANT	INTERMEDIATE	INTERMEDIATE SUSCEPTIBLE	SUSCEPTIBLE	HIGHLY SUSCEPTIBLE	UNKNOWN
ELDANA	HIGHLY RESISTANT	RESISTANT	INTERMEDIATE RESISTANT	INTERMEDIATE	INTERMEDIATE SUSCEPTIBLE	SUSCEPTIBLE	HIGHLY SUSCEPTIBLE	
THRIPS LEAF DAMAGE	LESS	MODERATE	MORE	UNKNOWN				
YSA LEAF DAMAGE	LESS	MODERATE	MORE	UNKNOWN				



Milling Characteristics

FIBRE CONTENT	VERY LOW	LOW	LOW TO MOD	MODERATE	MOD TO HIGH	HIGH	VERY HIGH
COLOUR	VERY LOW	LOW	ACCEPTABLE	HIGH	VERY HIGH		
PROCESSABILITY	VERY GOOD	GOOD	ACCEPTABLE	POOR	VERY POOR	UNKNOWN	

# N72 Identification Guide

## Habit and General Appearance

Vigorous structure; open growth habit; good canopy; good population

## Leaf

**Blade:** Narrow width and erect with no markings

**Sheath:** Loose adherence at the bottom/old internodes and medium adherence in younger internodes; fairly hairy with short and sharp hairs; reddish edge and reddish blotches

**Collar:** Medium size with a darker brownish colour

**Auricle:** Long and present only on one side

## Stalk

### Internode

**Appearance:** Cylindrical with slight zigzag; dark brownish with large blotches

**Wax band:** Broad/wide band not heavily waxed

**Bud furrow:** Present and shallow

### Node

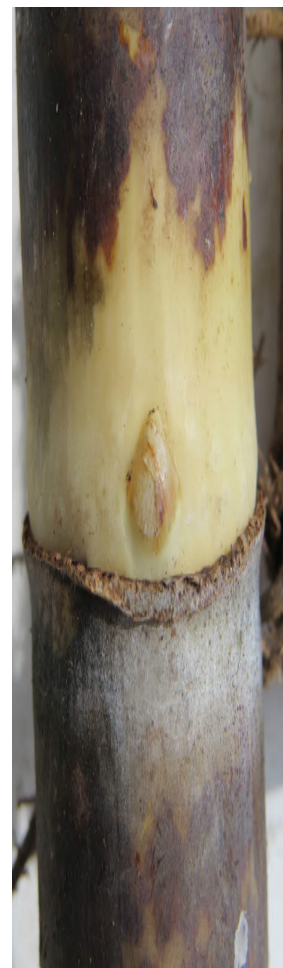
**Growth ring:** Indistinct and flat in older internodes but distinct and protruding in younger internodes

**Root band:** Raised in older nodes but flat in younger nodes

**Sheath scar:** Flat

**Bud:** Small and round; positioned within the root band

**Flange:** Distinct and narrow



January 2024

All copyright and other intellectual property rights subsisting in this work, including without limitation all text, images and graphics contained in this work (collectively, the "Contents") are owned by the South African Sugar Association ('the Owner'). Neither this work nor any of its Contents may be shared, modified or copied in whole or part in any form, or be used to create any derivative work without the owner's prior written permission. Whilst every effort has been made to ensure that the information contained in this work is accurate, the owner makes no representation, warranty or guarantee relating to the information contained in this work. The use of this work is at your own risk and neither the Owner nor its consultants or staff can be held liable for any loss or damage, whether direct or indirect, caused by the reliance on the information contained in this work. The use of proprietary names should not be considered as an endorsement for their use.