



Information Sheet

Variety NCo376

Irrigated

Rainfed

Introduction

Only recommended for some coastal regions where there are favourable growing conditions and harvested annually and where disease and pest levels are low.

Best features

Can be a reliable variety that produces good yields on moderate to high potential soils and under favourable growing conditions. Has good ratooning ability. Can recover from water stress as long as stress is not too severe. Responds well to ripeners. Shows some tolerance to soil salinity. Moderately tolerant to poorly drained soils.

Limiting features

Older variety. Has fairly low sucrose content. Most newer varieties outperform NCo376. Avoid harvesting early season due to immaturity at this time of year. Susceptible to most pests and diseases. Should not be carried over on coast due to eldana susceptibility. Has moderate to low N use efficiency which means that higher rate of N may be required. Has low tolerance to Aluminium toxicity. Initial observations are that this variety is susceptible to YSA.

Yield & quality



The performance of a variety will vary under different conditions and levels of management. For refined yield and quality information, please consult the SASRI Variety Guide at www.sasri.org.za/varietyguide, where you will be able to rank this variety against others of your choice based on your specific area, irrigation regime, cutting cycle, soil potential and time of harvest.



Management Factors

EARLY SEASON HARVEST	YES	NO	
MID-SEASON HARVEST	YES	NO	
LATE SEASON HARVEST	YES	NO	
SUITABILITY FOR CARRYOVER	YES	NO	
SUITABILITY FOR FROST POCKETS	YES	NO	UNKNOWN



Soil Potential

LOW POTENTIAL	YES	NO
AVERAGE POTENTIAL	YES	NO
HIGH POTENTIAL	YES	NO



Agronomic Characteristics

GERMINATION ABILITY	FAST	MODERATE	SLOW	
CANOPY DEVELOPMENT	FAST	MODERATE	SLOW	
STALK POPULATION	HIGH	MODERATE	LOW	
STALK HEIGHT	TALL	MODERATE	SHORT	
FLOWERING	SPARSE	MODERATE	PROFUSE	
LODGING	ERECT	AVERAGE	SEVERE	
TOLERANCE TO WATER STRESS	GOOD	MODERATE	POOR	UNKNOWN
TOLERANCE TO WATER LOGGING	GOOD	MODERATE	POOR	UNKNOWN



Response to Ripeners

ETHEPHON (and generics)	HIGHLY RECOMMENDED	RECOMMENDED	NOT RECOMMENDED	UNKNOWN
FUSILADE (and generics)	HIGHLY RECOMMENDED	RECOMMENDED	NOT RECOMMENDED	UNKNOWN
COMBO ETHEPHON + FUSILADE (and generics)	HIGHLY RECOMMENDED	RECOMMENDED	NOT RECOMMENDED	UNKNOWN
MODDUS	HIGHLY RECOMMENDED	RECOMMENDED	NOT RECOMMENDED	UNKNOWN
COMBO MODDUS + FUSILADE (and generics)	HIGHLY RECOMMENDED	RECOMMENDED	NOT RECOMMENDED	UNKNOWN



Reaction to Pests & Diseases

SMUT	HIGHLY RESISTANT	RESISTANT	INTERMEDIATE RESISTANT	INTERMEDIATE	INTERMEDIATE SUSCEPTIBLE	SUSCEPTIBLE	HIGHLY SUSCEPTIBLE	
MOSAIC	HIGHLY RESISTANT	RESISTANT	INTERMEDIATE RESISTANT	INTERMEDIATE	INTERMEDIATE SUSCEPTIBLE	SUSCEPTIBLE	HIGHLY SUSCEPTIBLE	
BROWN RUST	HIGHLY RESISTANT	RESISTANT	INTERMEDIATE RESISTANT	INTERMEDIATE	INTERMEDIATE SUSCEPTIBLE	SUSCEPTIBLE	HIGHLY SUSCEPTIBLE	UNKNOWN
TAWNY RUST	HIGHLY RESISTANT	RESISTANT	INTERMEDIATE RESISTANT	INTERMEDIATE	INTERMEDIATE SUSCEPTIBLE	SUSCEPTIBLE	HIGHLY SUSCEPTIBLE	UNKNOWN
ELDANA	HIGHLY RESISTANT	RESISTANT	INTERMEDIATE RESISTANT	INTERMEDIATE	INTERMEDIATE SUSCEPTIBLE	SUSCEPTIBLE	HIGHLY SUSCEPTIBLE	
THRIPS LEAF DAMAGE	LESS	MODERATE	MORE	UNKNOWN				
YSA LEAF DAMAGE	LESS	MODERATE	MORE	UNKNOWN				



Milling Characteristics

FIBRE CONTENT	VERY LOW	LOW	LOW TO MOD	MODERATE	MOD TO HIGH	HIGH	VERY HIGH
COLOUR	VERY LOW	LOW	ACCEPTABLE	HIGH	VERY HIGH		
PROCESSABILITY	VERY GOOD	GOOD	ACCEPTABLE	POOR	VERY POOR	UNKNOWN	

NCo376 Identification Guide

Habit and General Appearance

An erect cane with leaves which, although fairly erect, droop near the tips. Leaves are dark green, with a characteristic pale mottling nearly always present on the lower surface, particularly along the midrib. Trash somewhat clasping. Flowers fairly freely.

Leaf

Blade: Fairly erect but drooping towards the tip; medium width; dark green except for chlorotic blotching of lower surface of midrib.

Sheath: Hairs few to fairly plentiful; sheath somewhat loosely clasping; usually with a very slight purplish tinge on the outside and white or only slightly pinkish at the base on the inside.

Collar: Green to light brown.

Auricle: Usually present on both sides, with one side well developed. Arising at or slightly below the level of the base of the collar.

Stalk

Internode

Appearance: Medium in thickness and texture; nearly cylindrical but thinner towards the centre; staggered; yellow, but on exposure develops green patches that are sometimes overlaid with purplish flushes. Wax coating usually plentiful. Corky markings usually present and splitting is commonplace.

Wax band: Rather narrow; slightly constricted; often not very distinct because of a general wax coating all over.

Bud furrow: Absent

Node

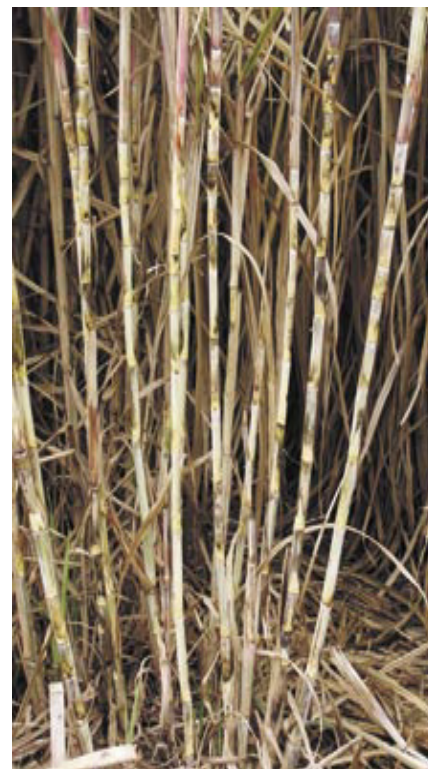
Growth ring: Light green in young nodes, waxy-yellow in older nodes. Flush or swollen.

Root band: Medium in width, narrowing slightly opposite bud; swollen, expanding towards base. In young nodes cream coloured, sometimes with green tinges; later becoming waxy yellow. Root primordia in two to three rows; depressed; centres dark without a purplish tinge.

Sheath scar: Slightly slanting; does not protrude nor sag below the bud, or does so only very slightly.

Bud: More or less circular; small to medium in size; arising at or slightly above the sheath scar. Usually does not reach the growth ring. Germination central.

Flange: Narrow and inconspicuous; arising at or above the centre of the bud. Apex not indented, or only slightly so. Tuft of hairs usually arises from the apex.



January 2024

All copyright and other intellectual property rights subsisting in this work, including without limitation all text, images and graphics contained in this work (collectively, the "Contents") are owned by the South African Sugar Association ("the Owner"). Neither this work nor any of its Contents may be shared, modified or copied in whole or part in any form, or be used to create any derivative work without the owner's prior written permission. Whilst every effort has been made to ensure that the information contained in this work is accurate, the owner makes no representation, warranty or guarantee relating to the information contained in this work. The use of this work is at your own risk and neither the Owner nor its consultants or staff can be held liable for any loss or damage, whether direct or indirect, caused by the reliance on the information contained in this work. The use of proprietary names should not be considered as an endorsement for their use.