



# Information Sheet

## Variety N28

Irrigated

### Introduction

Recommended for harvesting mid season in irrigated regions.

### Best features

Yields best when harvested mid season. Erect variety. Some tolerance to heavy, waterlogged soils.

### Limiting features

Poor tolerance of drought conditions.

### Yield & quality



The performance of a variety will vary under different conditions and levels of management. For refined yield and quality information, please consult the SASRI Variety Guide at [www.sasri.org.za/varietyguide](http://www.sasri.org.za/varietyguide), where you will be able to rank this variety against others of your choice based on your specific area, irrigation regime, cutting cycle, soil potential and time of harvest.

# Varietal Traits



## Management Factors

EARLY SEASON HARVEST	YES	NO	
MID-SEASON HARVEST	YES	NO	
LATE SEASON HARVEST	YES	NO	
SUITABILITY FOR CARRYOVER	YES	NO	
SUITABILITY FOR FROST POCKETS	YES	NO	UNKNOWN



## Soil Potential

LOW POTENTIAL	YES	NO
AVERAGE POTENTIAL	YES	NO
HIGH POTENTIAL	YES	NO



## Agronomic Characteristics

GERMINATION ABILITY	FAST	MODERATE	SLOW	
CANOPY DEVELOPMENT	FAST	MODERATE	SLOW	
STALK POPULATION	HIGH	MODERATE	LOW	
STALK HEIGHT	TALL	MODERATE	SHORT	
FLOWERING	SPARSE	MODERATE	PROFUSE	
LODGING	ERECT	AVERAGE	SEVERE	
TOLERANCE TO WATER STRESS	GOOD	MODERATE	POOR	UNKNOWN
TOLERANCE TO WATER LOGGING	GOOD	MODERATE	POOR	UNKNOWN



## Response to Ripeners

ETHEPHON (and generics)	HIGHLY RECOMMENDED	RECOMMENDED	NOT RECOMMENDED	UNKNOWN
FUSILADE (and generics)	HIGHLY RECOMMENDED	RECOMMENDED	NOT RECOMMENDED	UNKNOWN
COMBO ETHEPHON + FUSILADE (and generics)	HIGHLY RECOMMENDED	RECOMMENDED	NOT RECOMMENDED	UNKNOWN
MODDUS	HIGHLY RECOMMENDED	RECOMMENDED	NOT RECOMMENDED	UNKNOWN
COMBO MODDUS + FUSILADE (and generics)	HIGHLY RECOMMENDED	RECOMMENDED	NOT RECOMMENDED	UNKNOWN



## Reaction to Pests & Diseases

SMUT	HIGHLY RESISTANT	RESISTANT	INTERMEDIATE RESISTANT	INTERMEDIATE	INTERMEDIATE SUSCEPTIBLE	SUSCEPTIBLE	HIGHLY SUSCEPTIBLE	
MOSAIC	HIGHLY RESISTANT	RESISTANT	INTERMEDIATE RESISTANT	INTERMEDIATE	INTERMEDIATE SUSCEPTIBLE	SUSCEPTIBLE	HIGHLY SUSCEPTIBLE	
BROWN RUST	HIGHLY RESISTANT	RESISTANT	INTERMEDIATE RESISTANT	INTERMEDIATE	INTERMEDIATE SUSCEPTIBLE	SUSCEPTIBLE	HIGHLY SUSCEPTIBLE	UNKNOWN
TAWNY RUST	HIGHLY RESISTANT	RESISTANT	INTERMEDIATE RESISTANT	INTERMEDIATE	INTERMEDIATE SUSCEPTIBLE	SUSCEPTIBLE	HIGHLY SUSCEPTIBLE	UNKNOWN
ELDANA	HIGHLY RESISTANT	RESISTANT	INTERMEDIATE RESISTANT	INTERMEDIATE	INTERMEDIATE SUSCEPTIBLE	SUSCEPTIBLE	HIGHLY SUSCEPTIBLE	
THRIPS LEAF DAMAGE	LESS	MODERATE	MORE	UNKNOWN				
YSA LEAF DAMAGE	LESS	MODERATE	MORE	UNKNOWN				



## Milling Characteristics

FIBRE CONTENT	VERY LOW	LOW	LOW TO MOD	MODERATE	MOD TO HIGH	HIGH	VERY HIGH
COLOUR	VERY LOW	LOW	ACCEPTABLE	HIGH	VERY HIGH		
PROCESSABILITY	VERY GOOD	GOOD	ACCEPTABLE	POOR	VERY POOR	UNKNOWN	

# N28 Identification Guide

## Habit and General Appearance

An erect variety that has a fairly high stalk population and a canopy of erect, dark green leaves. The leaf sheath and stalk, when exposed, are purple in colour.

## Leaf

**Blade:** Medium width, erect, dark green, often with a bent leaf tip.

**Sheath:** Green, with the edges of the sheath sometimes purplish. A fair amount of wax bloom present. The entire sheath turns to purple on exposure. Sheath is purplish on the inside of the base. A few hairs usually present. Trash comes away easily.

**Collar:** Medium to broad, purplish.

**Auricle:** Fairly broad and pointed, present on one side only.

## Stalk

### Internode

**Appearance:** Medium diameter, yellowish-green, often with sooty dark patches. Turns dark purple on exposure where the trash does not cover the stalk. Corky markings sometimes present. Under some growing conditions, cracks or splits can occur.

**Wax band:** Narrow to medium, fairly distinct.

**Bud furrow:** Absent.

### Node

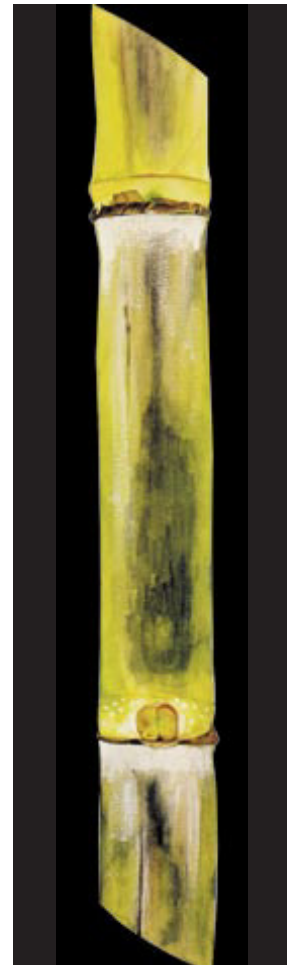
**Growth ring:** Yellowish-green, can be fairly indistinct. On the lower portion of the stalk, the growth ring is sometimes partly orange in colour.

**Root band:** Light yellow, fairly broad.

**Sheath scar:** Protruding slightly just below the bud.

**Bud:** Small to medium, round, protruding or slightly swollen. Young buds can be brownish in colour.

**Flange:** Narrow, sometimes with a purplish colouring at the apex. The flange does not reach the growth ring.



January 2024