



Information Sheet

Variety N36

Introduction

Recommended for rainfed and irrigated regions on a wide range of soils including shallow and sandy soils. Particularly recommended for high potential soils.

Best features

Only recommended for annual harvesting. Very good sucrose content. Good RV yields in annual, irrigated and frost pockets in the midlands region. Should be harvested from Mar to Oct. Rapid germination and canopy closure. Low stalk population with thick stalks. Good ratooning ability however this can be compromised with infield traffic. Good performance on wide range of soil types and growing conditions. Good yields achieved on higher potential sandy soils. While Ethephon and Fusilade Forte and their generics are recommended as suitable chemical ripeners for N36, the combination treatment is highly recommended for this variety.

Limiting features

Lodges readily under high yield potential conditions. Avoid planting and harvesting from mid-November through January to reduce the risk of mosaic spread in young cane. Do not harvest after mid October when there is flowering. Care must be taken not to damage stools when harvesting under wet conditions. High levels of eldana and sour rot observed when harvested older than 12 months. Ratoon regrowth is generally uneven, particularly when harvested during cold, wet conditions. Not recommended for dryland conditions in the Midlands.

Yield & quality



The performance of a variety will vary under different conditions and levels of management. For refined yield and quality information, please consult the SASRI Variety Guide at www.sasri.org.za/varietyguide, where you will be able to rank this variety against others of your choice based on your specific area, irrigation regime, cutting cycle, soil potential and time of harvest.



Management Factors

EARLY SEASON HARVEST	YES	NO	
MID-SEASON HARVEST	YES	NO	
LATE SEASON HARVEST	YES	NO	
SUITABILITY FOR CARRYOVER	YES	NO	
SUITABILITY FOR FROST POCKETS	YES	NO	UNKNOWN



Soil Potential

LOW POTENTIAL	YES	NO
AVERAGE POTENTIAL	YES	NO
HIGH POTENTIAL	YES	NO



Agronomic Characteristics

GERMINATION ABILITY	FAST	MODERATE	SLOW	
CANOPY DEVELOPMENT	FAST	MODERATE	SLOW	
STALK POPULATION	HIGH	MODERATE	LOW	
STALK HEIGHT	TALL	MODERATE	SHORT	
FLOWERING	SPARSE	MODERATE	PROFUSE	
LODGING	ERECT	AVERAGE	SEVERE	
TOLERANCE TO WATER STRESS	GOOD	MODERATE	POOR	UNKNOWN
TOLERANCE TO WATER LOGGING	FAST	MODERATE	POOR	UNKNOWN



Response to Ripeners

ETHEPHON (and generics)	HIGHLY RECOMMENDED	RECOMMENDED	NOT RECOMMENDED	UNKNOWN
FUSILADE (and generics)	HIGHLY RECOMMENDED	RECOMMENDED	NOT RECOMMENDED	UNKNOWN
COMBO ETHEPHON + FUSILADE (and generics)	HIGHLY RECOMMENDED	RECOMMENDED	NOT RECOMMENDED	UNKNOWN
MODDUS	HIGHLY RECOMMENDED	RECOMMENDED	NOT RECOMMENDED	UNKNOWN
COMBO MODDUS + FUSILADE (and generics)	HIGHLY RECOMMENDED	RECOMMENDED	NOT RECOMMENDED	UNKNOWN



Reaction to Pests & Diseases

SMUT	HIGHLY RESISTANT	RESISTANT	INTERMEDIATE RESISTANT	INTERMEDIATE	INTERMEDIATE SUSCEPTIBLE	SUSCEPTIBLE	HIGHLY SUSCEPTIBLE	
MOSAIC	HIGHLY RESISTANT	RESISTANT	INTERMEDIATE RESISTANT	INTERMEDIATE	INTERMEDIATE SUSCEPTIBLE	SUSCEPTIBLE	HIGHLY SUSCEPTIBLE	
BROWN RUST	HIGHLY RESISTANT	RESISTANT	INTERMEDIATE RESISTANT	INTERMEDIATE	INTERMEDIATE SUSCEPTIBLE	SUSCEPTIBLE	HIGHLY SUSCEPTIBLE	UNKNOWN
TAWNY RUST	HIGHLY RESISTANT	RESISTANT	INTERMEDIATE RESISTANT	INTERMEDIATE	INTERMEDIATE SUSCEPTIBLE	SUSCEPTIBLE	HIGHLY SUSCEPTIBLE	UNKNOWN
ELDANA	HIGHLY RESISTANT	RESISTANT	INTERMEDIATE RESISTANT	INTERMEDIATE	INTERMEDIATE SUSCEPTIBLE	SUSCEPTIBLE	HIGHLY SUSCEPTIBLE	
THRIPS LEAF DAMAGE	LESS	MODERATE	MORE	UNKNOWN				
YSA LEAF DAMAGE	LESS	MODERATE	MORE	UNKNOWN				



Milling Characteristics

FIBRE CONTENT	VERY LOW	LOW	LOW TO MOD	MODERATE	MOD TO HIGH	HIGH	VERY HIGH
COLOUR	VERY LOW	LOW	ACCEPTABLE	HIGH	VERY HIGH		
PROCESSABILITY	VERY GOOD	GOOD	ACCEPTABLE	POOR	VERY POOR	UNKNOWN	

N36 Identification Guide

Habit and General Appearance

N36 is a low population variety with medium to thick stalks, and a slightly open growth habit. The stalks often grow slightly bent. The canopy is fairly sparse, with erect dark green leaves, medium to broad in width.

Leaf

Blade: Medium width, erect, sometimes with bent leaf tips. Often there is light chlorotic blotching on both the midrib and blade.

Sheath: Green, with hairs present and a lot of wax bloom. The trash can be peeled off fairly easily.

Collar: Medium width, yellow-green, sometimes with slight purple.

Auricle: Broad, long and pointed; on one side only.

Stalk

Internode

Appearance: Medium length and diameter, staggered, sometimes with cracks. There are some corky markings present. Light yellow in colour, becoming yellow-green on exposure.

Wax band: Medium width, fairly distinct.

Bud furrow: Often present.

Node

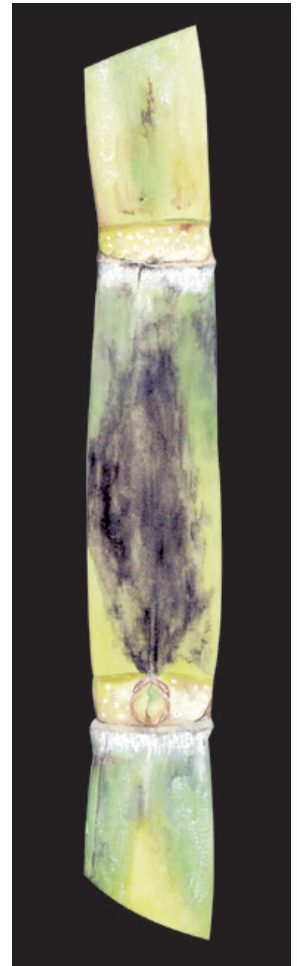
Growth ring: Medium, slightly protruding, light yellow-green.

Root band: Medium width, light green-yellow in colour.

Sheath scar: Slanting slightly.

Bud: Medium, slightly longer than broad, arises at the sheath scar.

Flange: Medium to small, with long hairs at the apex. Arises towards the top of the bud. Usually reaches the growth ring.



January 2024

All copyright and other intellectual property rights subsisting in this work, including without limitation all text, images and graphics contained in this work (collectively, the "Contents") are owned by the South African Sugar Association ("the Owner"). Neither this work nor any of its Contents may be shared, modified or copied in whole or part in any form, or be used to create any derivative work without the owner's prior written permission. Whilst every effort has been made to ensure that the information contained in this work is accurate, the owner makes no representation, warranty or guarantee relating to the information contained in this work. The use of this work is at your own risk and neither the Owner nor its consultants or staff can be held liable for any loss or damage, whether direct or indirect, caused by the reliance on the information contained in this work. The use of proprietary names should not be considered as an endorsement for their use.