

BIOSECURITY ALERT!

The Longhorn Beetle poses a real threat to sugarcane in South Africa. Your assistance is requested to look out for this pest as illustrated below.



Pig damage may indicate presence of larvae



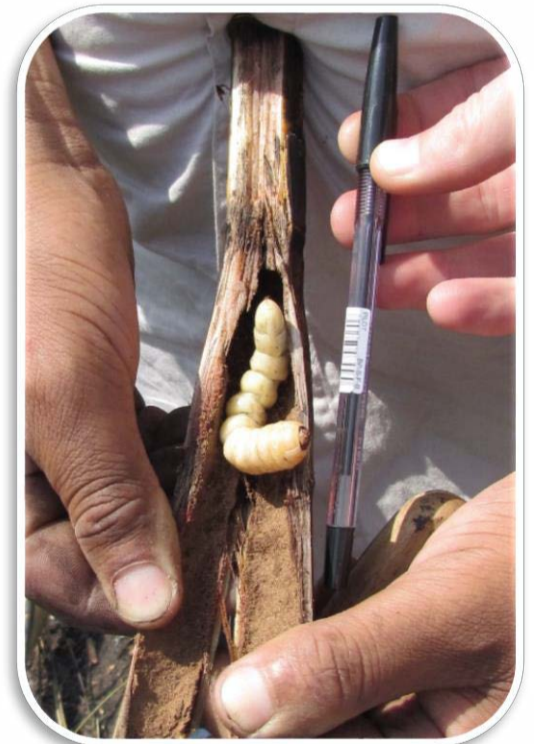
Stressed cane



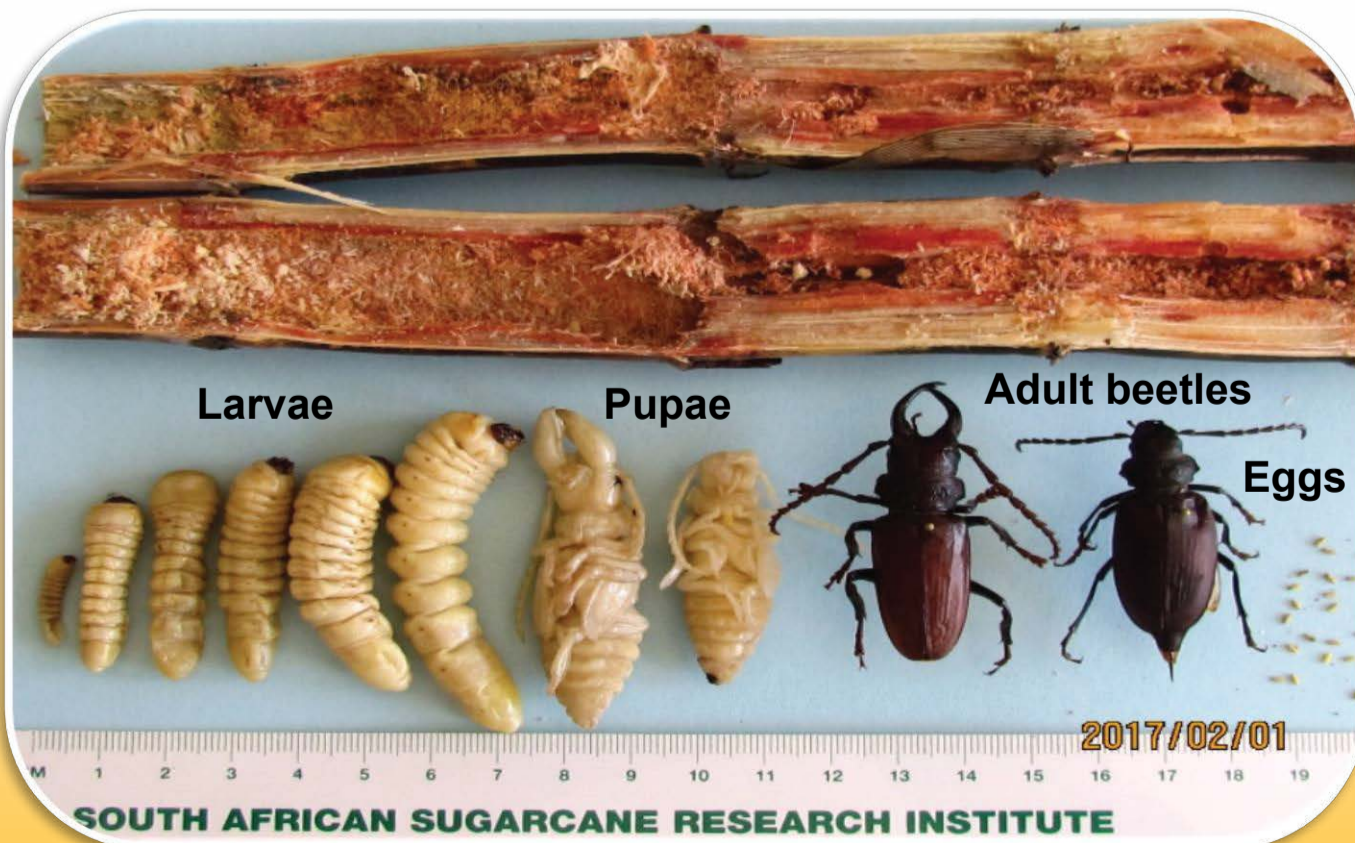
Larva in cane stubble



Larva in base of stalk



Larva in stalk



Life stages

If you find damage or larvae, please inform your local Extension Specialist or Biosecurity Officer

