

Izifo Zomoba

2018

Ikhasi 1

Izifo ezibalulekile zomoba ilezi:

1. Ubhasha (RSD)



2. Umabalabala (Mosaic)



3. Isiwumba (Smut)

Izifo Zomoba

Ikhasi 2

uBhasha - Isifo esibhashisa umoba

- Sitholakala kuzo zonke izindawo
- Zonke izinhlobo ezikhiqizwe eNingizimu Afrika ziyahlaselwa ilesi sifo

Senzani lesi sifo esibhashisa umoba?

- Ungalahlekelwa cishe isigamu sonke sesivuno sakho
- Sishaya kuzwele kakhulu emobeni ongondlekile kahle

Izimpawu

- Izingoqo ezizacile, ezimfushane futhi ezibhashile.
- Insimu ibukeka ingalingani
- Akulula ukuthi ubone uma sesihlasele



Yini eyandisa lesi sifo esibhashisa umoba?

- Ukutshala imbewu enaso lesi sifo
- Obhushu abangahlanzekile ngesikhathi kuhlahlwa
- Amavolontiya asala ensimini anesifo



Singanqandwa kanjani

- Sebenzisa imbewu ehloliwe kanye necwiliswe emanzini abilayo
- Mayihlolwe imbewu ukuthi ayinawo uBhasha
- Cwilisa obhushu emanzini anoshibhoshi uma uhlahla
- Susa amavolontiya ensimini



Izifo Zomoba

Ikhasi 3

uMabalabala

- UMabalabala utholakala ikakhulukazi ezindaweni ezibandayo kodwa nakwezinye izindawo uyatholakala
- Izinhlobo eziningi ezintsha ziyamelana nalesi sifo

Wenzani uMabalabala?

- Ukhuphula amathuba okulahlekelwa isivuno.

Izimpawu

- Isitshalo siba nombala ophuzi oyela kohlaza
- Amaqabunga wona aba nombala omabhadubhadu ngokuhlaza (Kulula ukusibona emaqabungeni omoba omcane).



Yini eyandisa lesi sifo uMabalabala?

- Ukutshala ngembewu enalesi sifo
- Sandiswa izinambuzane ezizishaya santwala okuthiwa i-maize aphid



Singanqandwa kanjani?

- Ngokusebenzisa izinhlobo zomoba ezimelana naso
- Ukutshala ngembewu engenasifo
- Ukunqanda ukhula notshani (ukhula lufukamela igciwane lalesi sifo)
- Qikelela ukugcina imithetho nemiyalelo yophiko lwamakomidi abhekene nezifo, izinambuzane nezemvelo.

Izifo Zomoba

Ikhasi 4

Isiwumba

- Isiwumba sitholakala ikakhulukazi ezindaweni eziseNyakatho yesifundazwe saKwaZulu Natali nezichelelayo.

Senzani isiwumba?

- Sidala ukulahlekelwa yisivuno
- Isivuno sehla minyaka yonke
- Ukulahleka kwesivuno kungafinyelela emaphesentini angamashumi ayisikhombisa nanhlanu (75%) emobeni okhahlamezekile.
- Ezinye izinhlobo ziyasizwela kakhulu lesifo isib. Nco376, N16, N39..



Izimpawu

- Uma sisaqala - isiqu sikhula sibe side
- Uma sesingenile - ukwakhela kwento esasiswebhu emnyama
- Isiqu esinalesi sifo sikhula kube sengathi utshani



Okusasiswebhu esimnyama



Umoba okhahlamezeke kakhulu

Yini eyandisa lesi sifo?

- Ukutshala imbewu enalesi sifo
- Izinhlamvu ezincane ezisuka emobeni onesifo zipheshulwa umoya
- Ukutshala emhlabathini onalesi sifo.

Singanqandwa kanjani?

- Ukutshala izinhlobo zomoba ezikwaziyo ukusimela lesi sifo isib. N27, N29, N35
- Ukutshala imbewu engenasifo
- Ukhiphe wonke umoba owubona ukuthi unalesisifo
- Insimu eshaywe kakhulu ilesi sifo, yitshale kabusha
- Khipha wonke amavolontiya
- Vikela umoba ungahlukumezeki.



Izifo Zomoba

Ikhasi 5

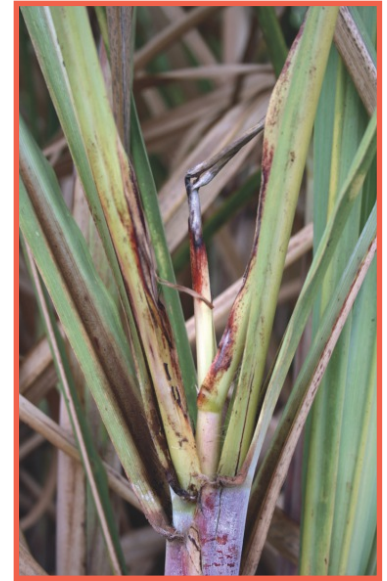
Ezinye izifo ezejwayelekile



Isifo
sikaphayinaphu



Ukubola okubovu



Pokkah
Boeng



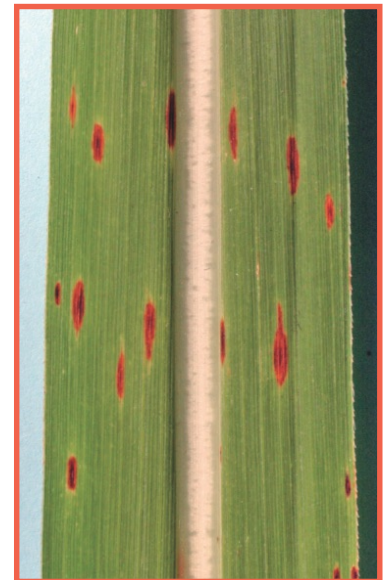
Tawny Rust



Brown Rust



Ring Spot



Amachashaza
ansundu

Izifo ezingajwayelekele



Ukuncipha
kwamaqabunga

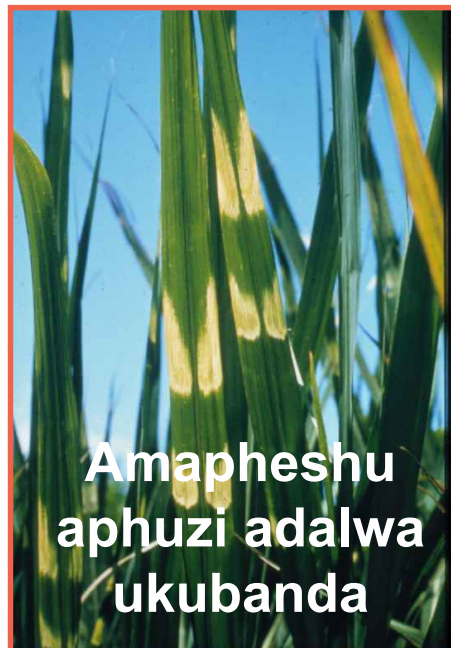


Amaqabunga aphuzi

Izimpawu okungezona ezezifo



Ukusweleka
komsoco



Amapheshu
aphuzi adalwa
ukubanda



Ukulimala
okudalwe
isibulala-khula