

BIOSECURITY ALERT

ORANGE RUST

Lesions (marks) on leaf:

- orange to reddish brown
- up to 4 mm long
- more severe towards leaf base

Spores:

- orange when fresh
- usually only on the lower leaf surface

Favoured by humid, warm conditions

Tends to occur on older crops (>6 months)

BROWN RUST

Lesions (marks) on leaf:

- cinnamon brown to dark brown
- up to 20 mm long
- more severe towards leaf tip

Spores:

- brown when fresh
- usually only on the lower leaf surface

Favoured by cool nights, warm days

Tends to occur on young crops (< 6 months)

TAWNY RUST

(previously known as African Sugarcane Rust)

Lesions (marks) on leaf:

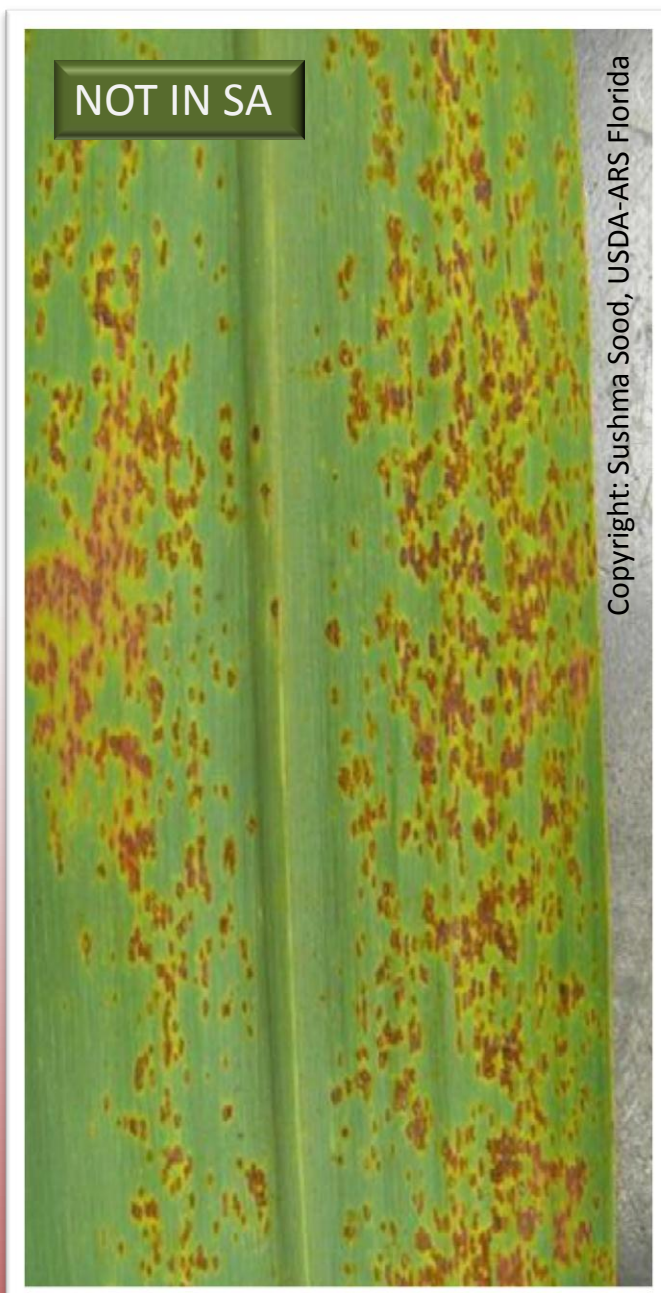
- orange to reddish-brown
- similar in size to brown rust
- more severe towards leaf tip

Spores:

- orange when fresh, profuse
- also occur on upper leaf surface

Favoured by cool, moist weather

Has been observed on young and mature crops



If you see symptoms that you are unsure of,
please inform your local Extension Specialist
or contact us via the Biosecurity Hotline.