

# Brown rust

Common disease  
in southern  
Africa



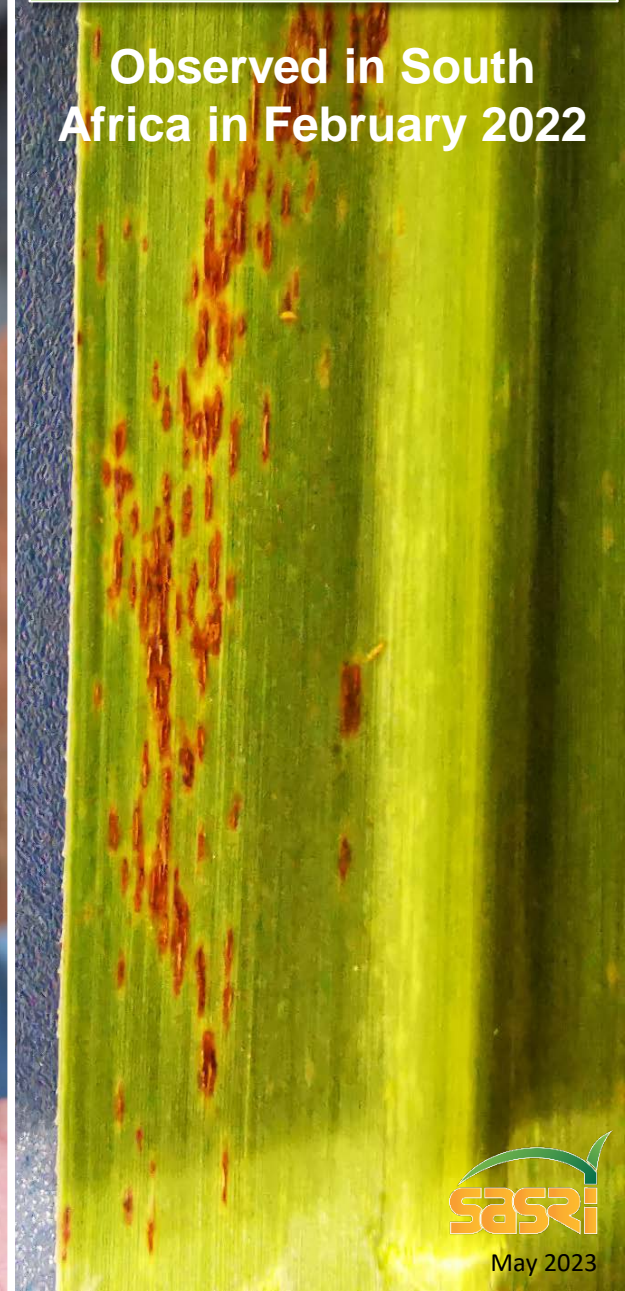
# Tawny rust

Southern Africa 2008 / 09  
No other reports outside  
region



# Orange rust

Observed in South  
Africa in February 2022



# Brown rust

## Lesions (marks) on leaf:

- Dark brown to reddish-brown
- Up to 20mm long and 3mm wide
- More concentrated near the leaf tip

## Spores:

- Cinnamon to brown when fresh
- Mainly on lower leaf surface
- Very rarely on upper leaf surface
- Usually sparse

## Age of cane:

- Usually 6 months or younger

## Favoured by:

- Cool (16 to 22°C), misty or light rain, heavy dews, high humidity
- Limited by temperatures exceeding 30°C

## Season:

- Most common but not limited to April to June, August to September / October

# Tawny rust

## Lesions (marks) on leaf:

- Dark brown to reddish-brown, may be some purpling around the border
- Up to 20mm long and 3mm wide
- More concentrated near the leaf tip

## Spores:

- Bright orange when fresh
- Mainly on lower leaf surface but also on upper leaf surface
- Abundant, easily transferred to clothes and skin

## Age of cane:

- All ages
- On young plants, often most severe on the leaves closest to the ground

## Favoured by:

- Cool (15 to 23°C), misty or light rain, heavy dews, high humidity
- Limited by temperatures exceeding 30°C

## Season:

- Most common but not limited to April to June, August to October

# Orange rust

## Lesions (marks) on leaf:

- Orange to orange-brown to reddish brown
- Up to 4 mm long and 0.5mm wide
- Often more severe in the middle of the leaf, extending to leaf tip
- May be confused with yellow sugarcane aphid (YSA) damage

## Spores:

- Orange to cinnamon-brown
- Mainly on lower leaf surface but may be observed on upper surface when severe
- Relatively abundant

## Age of cane:

- All ages

## Favoured by:

- Warm, wet, high humidity
- Limited by temperatures exceeding 30°C

## Season:

- Most common but not limited to December to May