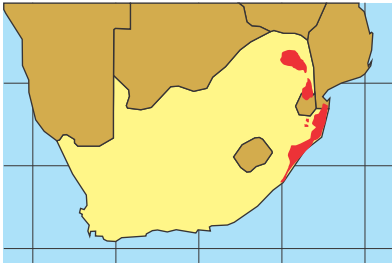


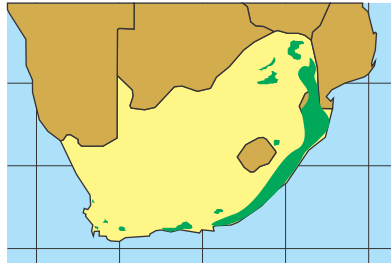
# ALIEN PLANTS<sup>1</sup>

2018

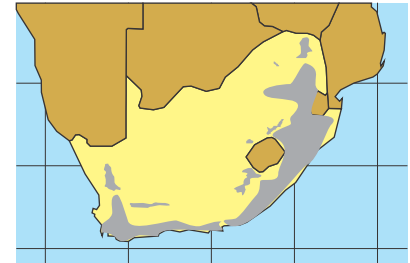
## What is an Alien Plant?



**CHROMOLAENA**  
(South America)



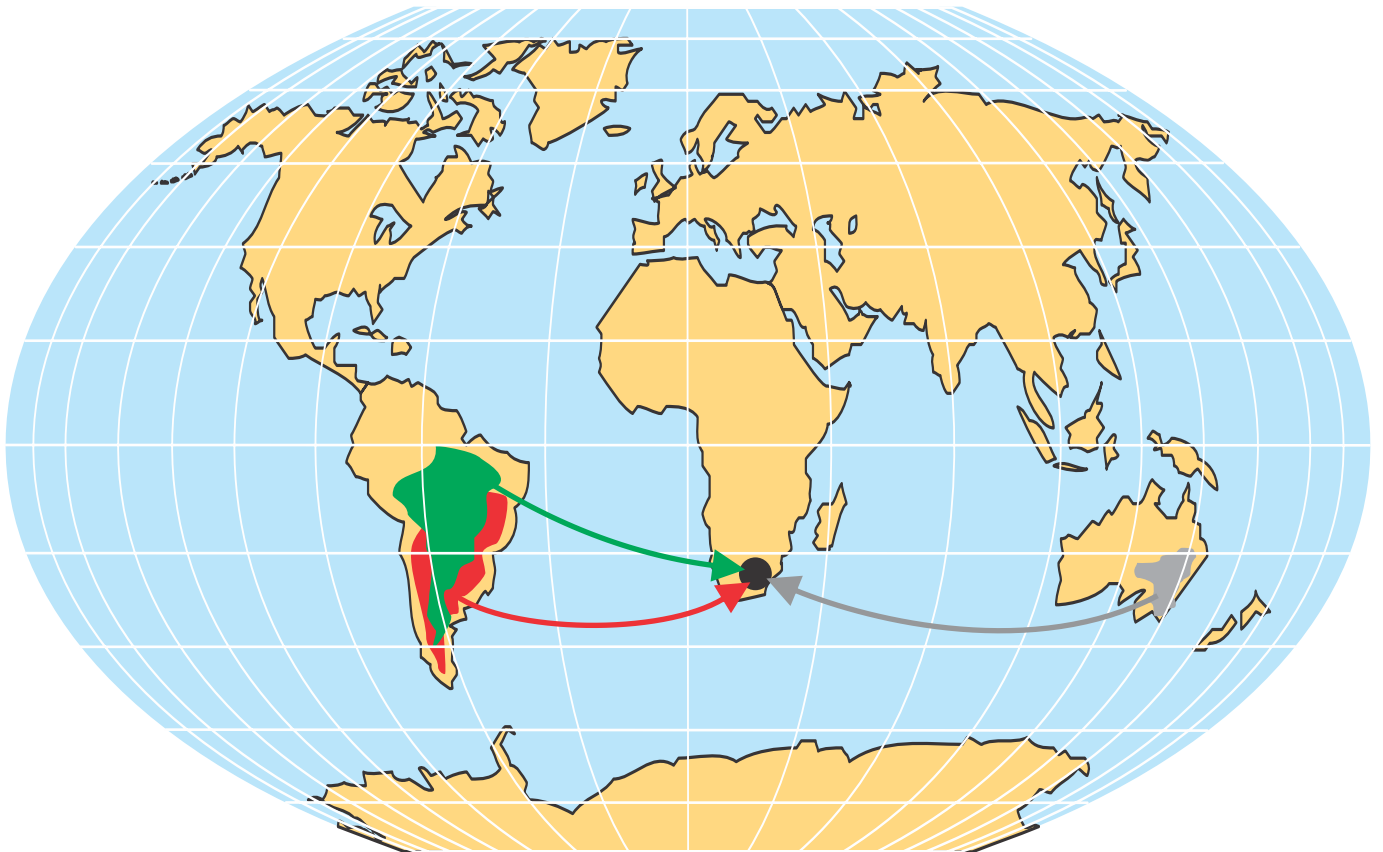
**LANTANA**  
(South America)



**BLACK WATTLE**  
(Australia)

## Where do Alien Plants come from?

Introduced from other countries by accident  
or for its usefulness



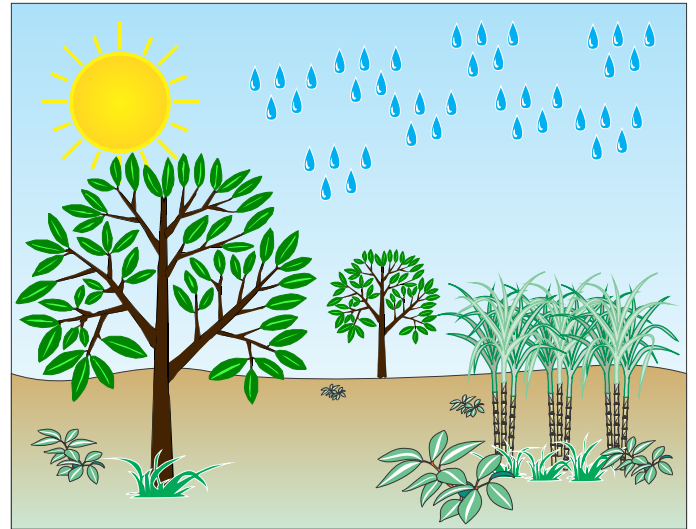
# ALIEN PLANTS<sup>2</sup>

## Why control Alien Plants?

**Alien plants compete with other plants for:**

- Sunlight
- Water
- Food
- Space

- Kills natural grasses
- Increases erosion
- Destroys natural habitats



## Why Alien Plants are invasive?

- **Produce many seeds**  
Chromolaena produces millions of seeds
- **Seeds can survive a long time**  
Black Wattle seeds can survive for  $\pm$  80 years re-infestation occurs
- **Seeds spread easily**  
Wind, water, animals or machinery
- **Few natural enemies**

# ALIEN PLANTS<sup>3a</sup>

## Identification and Categories

### CATEGORY 1

- **Must be removed and controlled.**

1. Triffid Weed
2. Lantana
3. Bug Weed
4. Pereskia



Triffid Weed



Lantana



Bug Weed



Pereskia



# ALIEN PLANTS <sup>3b</sup>

## Identification CATEGORY 2

- Only allowed with a permit from Agricultural Resource Management
- Spread must be controlled.

1. Guava
2. Black Wattle
3. Gum
4. Pine



Guava



Black Wattle



Gum



Pine

# ALIEN PLANTS<sup>3c</sup>

## Identification

### CATEGORY 3

- Trade or further planting is not allowed.

1. Syringa
2. Jacaranda
3. Loquat
4. Mulberry



Syringa



Jacaranda



Loquat



Mulberry



# ALIEN PLANTS<sup>4a</sup>

## Control methods

- Mechanical
- Biological
- Chemical

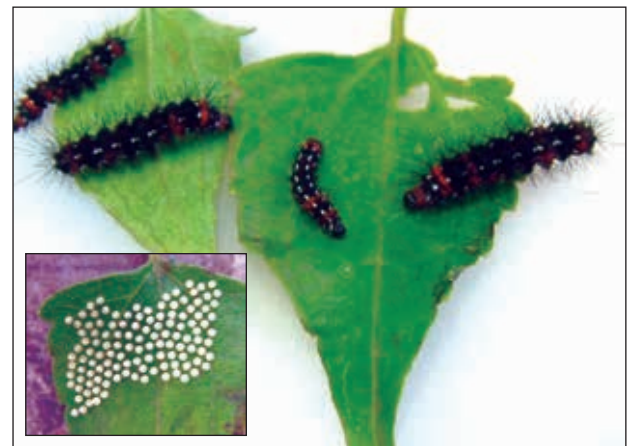
### MECHANICAL

- Hand pulling of seedlings
- Slashing and burning
- Strip barking



### BIOLOGICAL

- Uses natural enemies
- Most effective in dense growth
- Host-specific (only eats Alien plants **NOT** the crop)



### CHEMICAL

Applied to:

- Cut stump
- Basal stem
- Foliage



# ALIEN PLANTS <sup>4b</sup>

## Equipment & Treatments

### Paint brush

- Used for cut stumps and basal stem treatment.



### Bush knife / slasher

- Cut stump
- Strip barking
- Dense growth cut back



### Knapsack Sprayer with solid cone nozzle

- Used for short regrowth.
- Foliar spray
- Cut stump

### Treatment for tall regrowth

- Cut back dense growth in winter
- Spray regrowth in spring
- Regrowth must be knee to waist high
- Hand slash + knapsack spray





# ALIEN PLANTS 5

## Stages of Control

All stages require followup control

### Step 1. LIGHT CONTROL

- Fewer alien plants
- Cheaper and easier to control



### Step 2. MEDIUM CONTROL

- Remove seedlings, roots suckers and re-growth from stumps

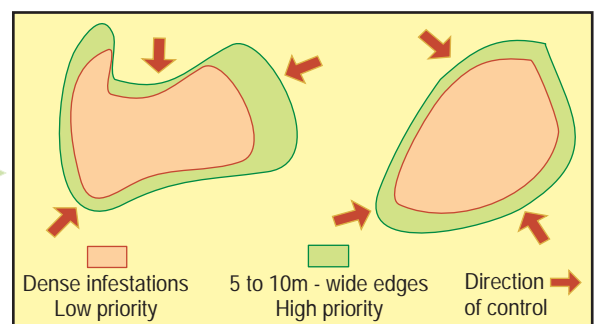


### Step 3. DENSE CONTROL

- Control of larger plants
- Adult plants will produce seeds
- Start only when light and medium control have been done

- If money is not available control the edges of dense areas

### Confine edges of dense infestations



- Encourage grass to grow and stabilize soil, preventing erosion





# ALIEN PLANTS <sup>6</sup>

## Care and use of Herbicides

- Identify the Alien plant.
- Choose a suitable herbicide.
- Choose the correct application method.
- Herbicides are dangerous and expensive so follow label recommendations.
- Users should be trained on the use of herbicides.
- Mix chemicals correctly.
- Use good quality water.
- Wear protective clothing at all times.
- Store herbicides in a safe place.
- Burn empty herbicide containers.

