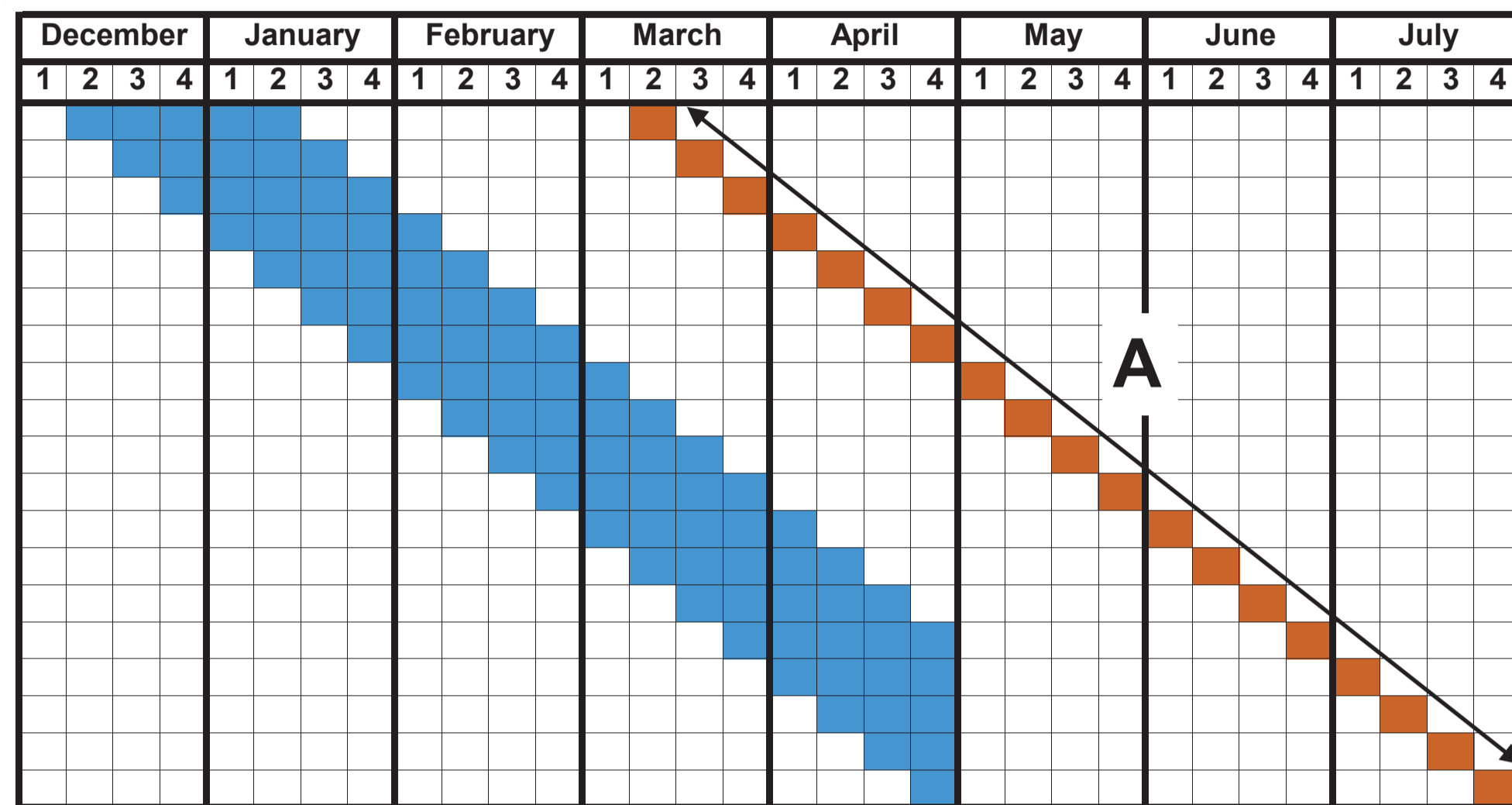


# RIPENER SPRAY-TO-HARVEST INTERVAL GUIDE

Harvest weeks falling during time-period indicated by arrows:  
 A = Chemical ripening period (to improve quality)  
 B = Only apply chemical on merit (following maturity assessment)  
 C = Late-season quality maintenance period (to maintain high quality)

## Timing schedule of ETHEPHON\* application

■ Possible weeks of ETHEPHON\* spraying    ■ Week of harvesting



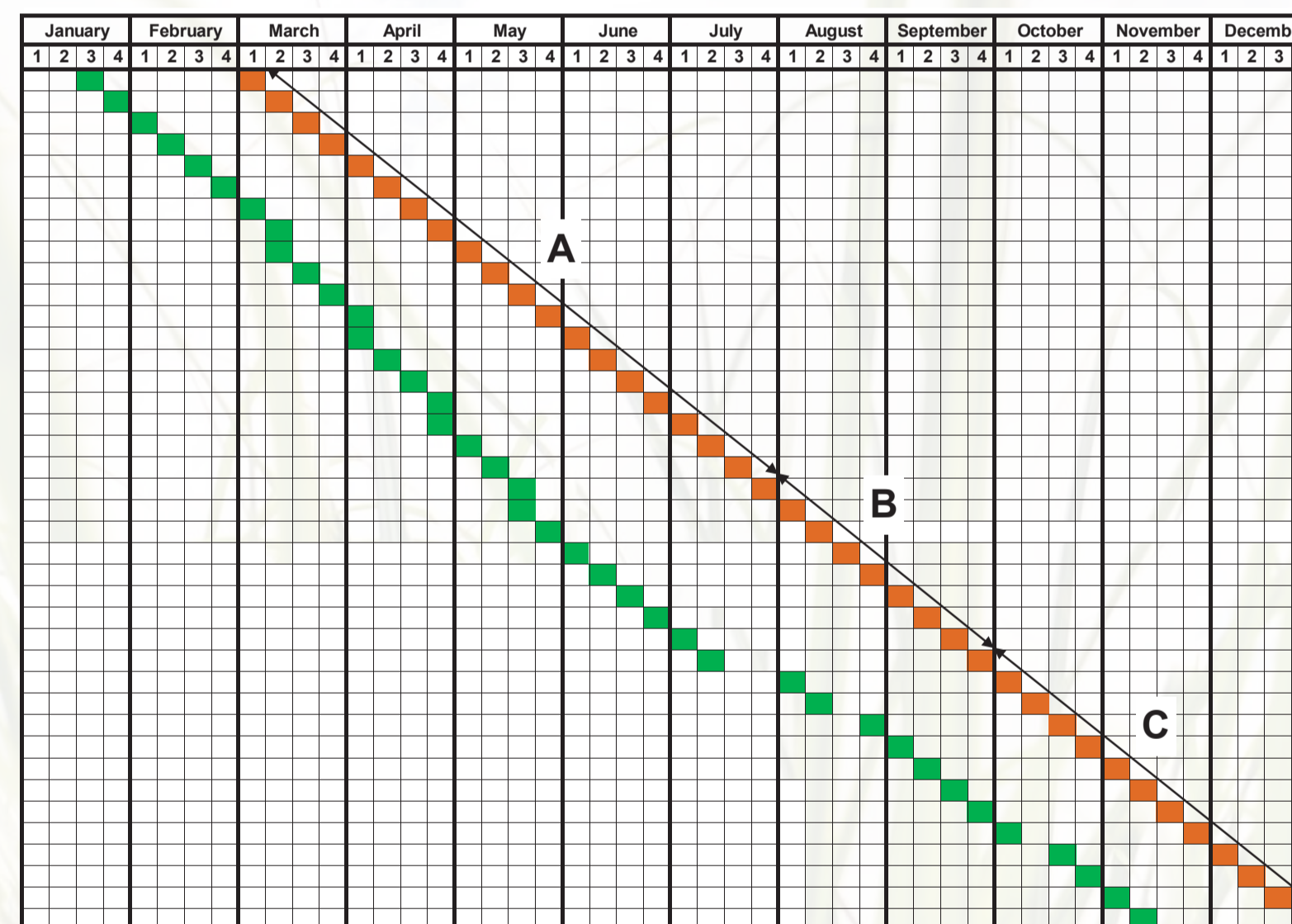
This poster provide guidelines to assist growers in determining suitable window periods of applying either single or combination chemical treatments for purposes of chemical ripening or late-season cane quality maintenance for the different harvest months. Refer to SASRI Information Sheets 12.3-12.5 for chemical-specific recommendations.

The optimal timing of application might vary depending on crop growth vigour, which is influenced by many factors including location, climate, variety, crop maturity and management.

For precision-agriculture purposes, timing may be adjusted based on information gleaned from hand-held refractometer measurements, recorded at intervals between spraying and the planned harvest date. Refer to SASRI Information Sheet 12.2 for more information on the measuring method and interpretation of refractometer readings for this purpose.

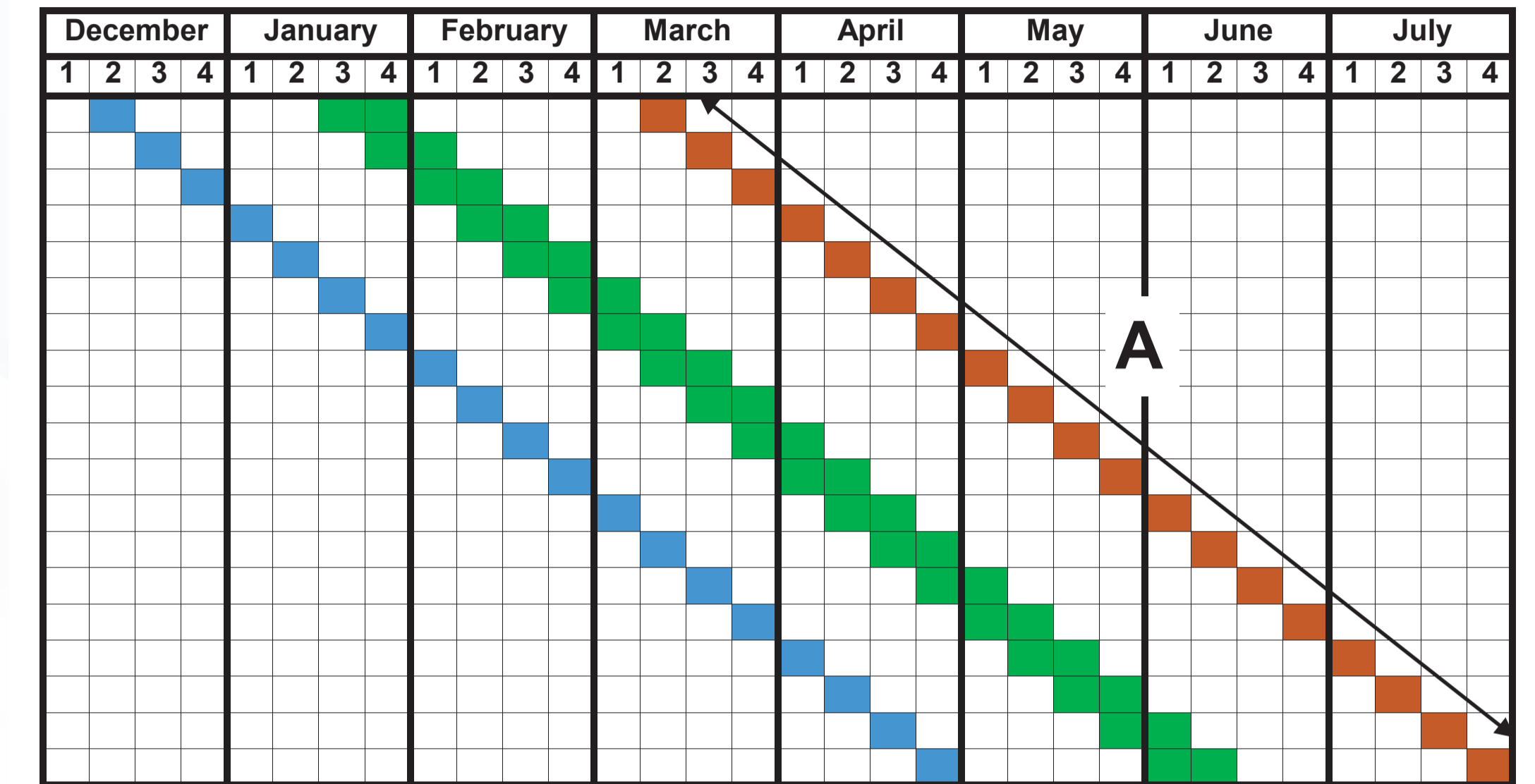
## Timing schedule of FUSILADE FORTE\* application

■ Week of FUSILADE FORTE\* spraying    ■ Week of harvesting



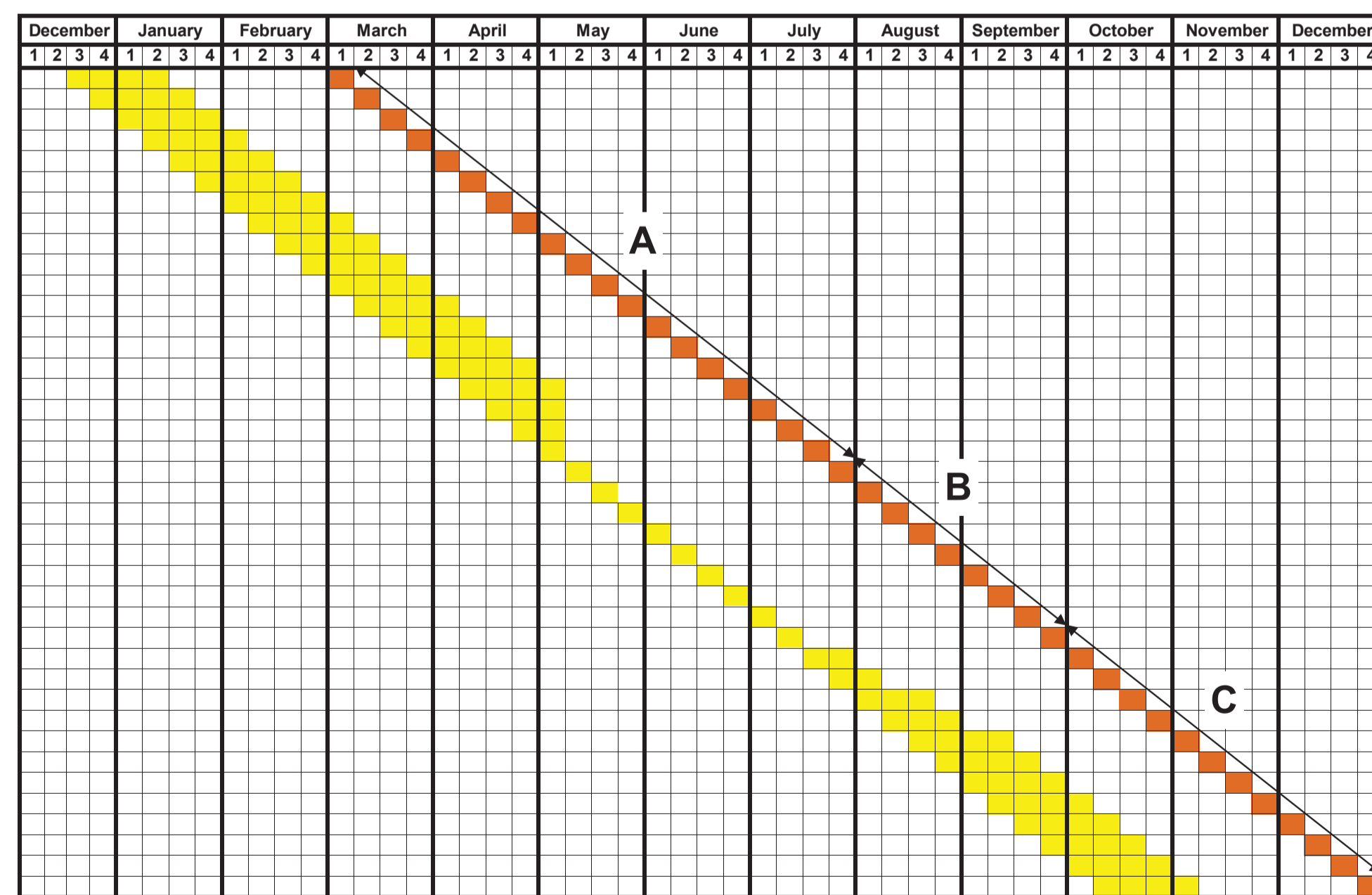
## Timing schedule of ETHEPHON\* and FUSILADE FORTE\* combination treatment

■ Week of ETHEPHON\* spraying    ■ Possible weeks of FUSILADE FORTE\* spraying    ■ Week of harvesting



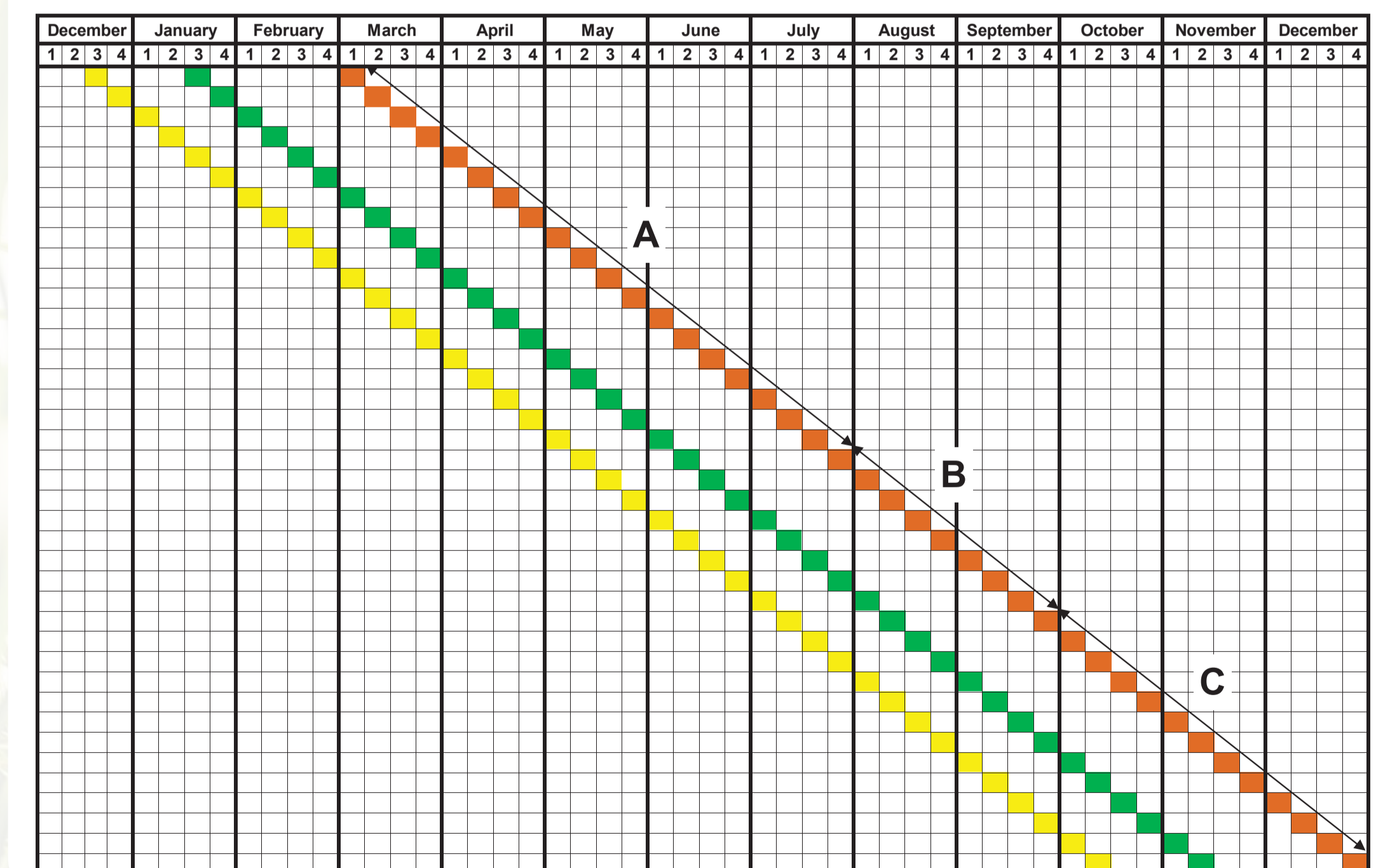
## Timing schedule of MODDUS\*\* application

■ Possible weeks of MODDUS\*\* spraying    ■ Week of harvesting



## Timing schedule of MODDUS\*\* and FUSILADE FORTE\* combination treatment

■ Week of MODDUS\*\* spraying    ■ Week of FUSILADE FORTE\* spraying    ■ Week of harvesting



**Important:** Always verify that the desired treatment option is recommended for the particular variety. Consult the latest variety response table within the **PurEst**® application.

**Important:** Always consult the product label to establish the legal withholding period (minimum number of days between application and harvest).

\* and other trade names  
 \*\* and any future trade names