

# South African Sugarcane Industry's Sustainability Journey

Sam Maphumulo

31 October 2024

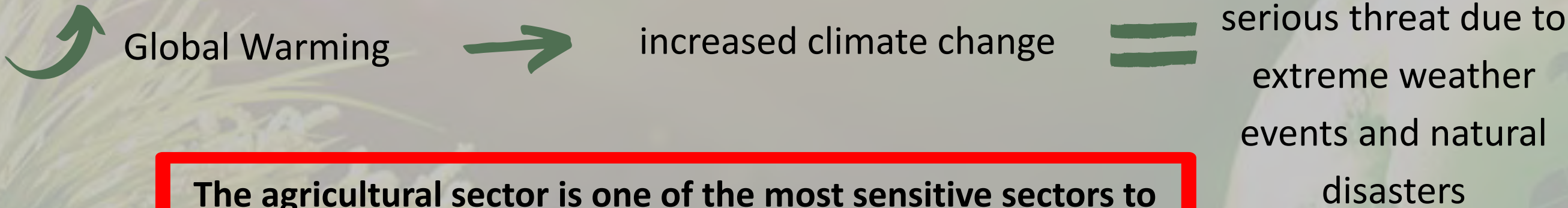




# SUSTAINABILITY

According to the United Nations Brundtland Commission (1987), sustainability is “meeting the needs of the present without compromising the ability of future generations to meet their own needs.”

Three Pillars of Sustainability:  
Economic growth, Social well-being, Environmental protection



**The agricultural sector is one of the most sensitive sectors to these extreme weather events and natural disasters since it relies heavily on natural resources such as land and water.**

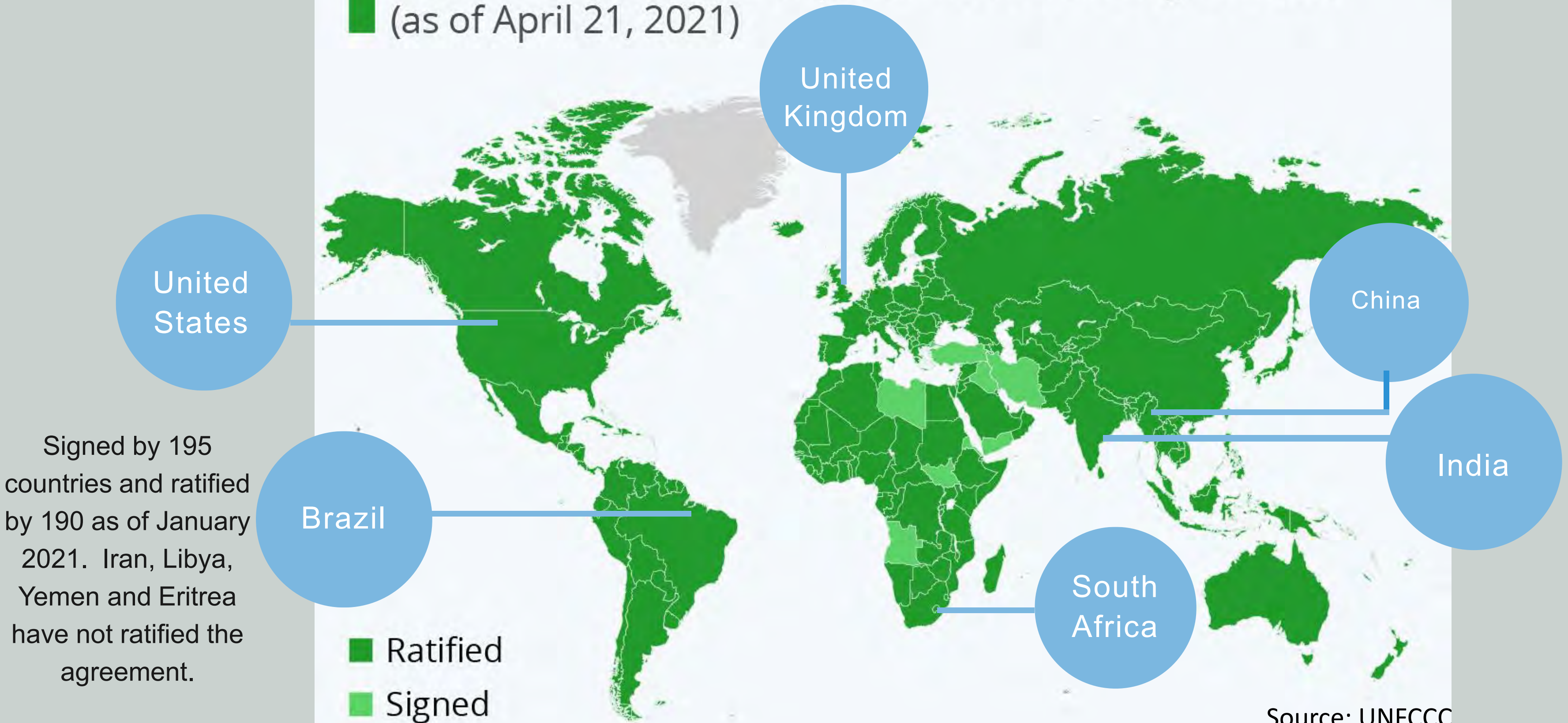
Due to the threat on sustainable development, countries agreed to reduce greenhouse gas emissions through international agreements on climate change such as the Kyoto Protocol (2005) and the Paris Agreement (2015).





# The State of the Paris Agreement

Countries by their participation in the Paris Agreement  
(as of April 21, 2021)



Signed by 195 countries and ratified by 190 as of January 2021. Iran, Libya, Yemen and Eritrea have not ratified the agreement.



## Key aspects of the agreement that countries, including South Africa, have agreed to.

- To limit the global temperature
- Mitigation
- Adaptation
- Finance, technology and capacity-building support
- Climate change education,
- Transparency, implementation and compliance
- A global stock take to take place every 5 years

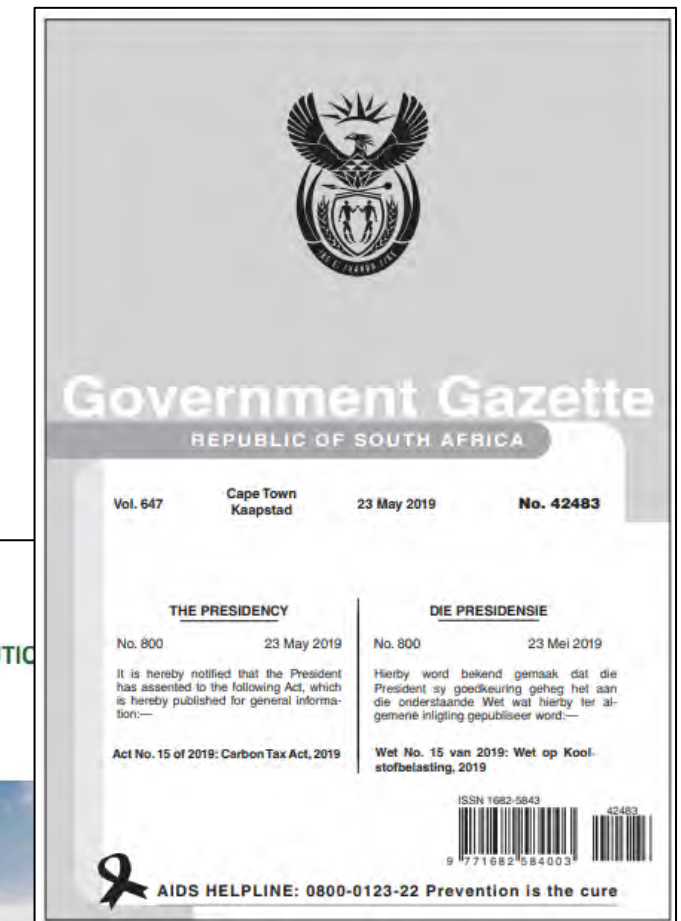
## South Africa has developed its policies to align with commitments made under the Paris Agreement.

- Carbon Tax Act 15 of 2019 and associated regulations
- SA's Updated Nationally Determined Contributions
- Climate Change Act 22 of 2024
- Other (Integrated Resource Plan, Green Transport Strategy, Just Energy Transition Framework,



**SOUTH AFRICA**  
**FIRST NATIONALLY DETERMINED CONTRIBUTION**  
**UNDER THE PARIS AGREEMENT**

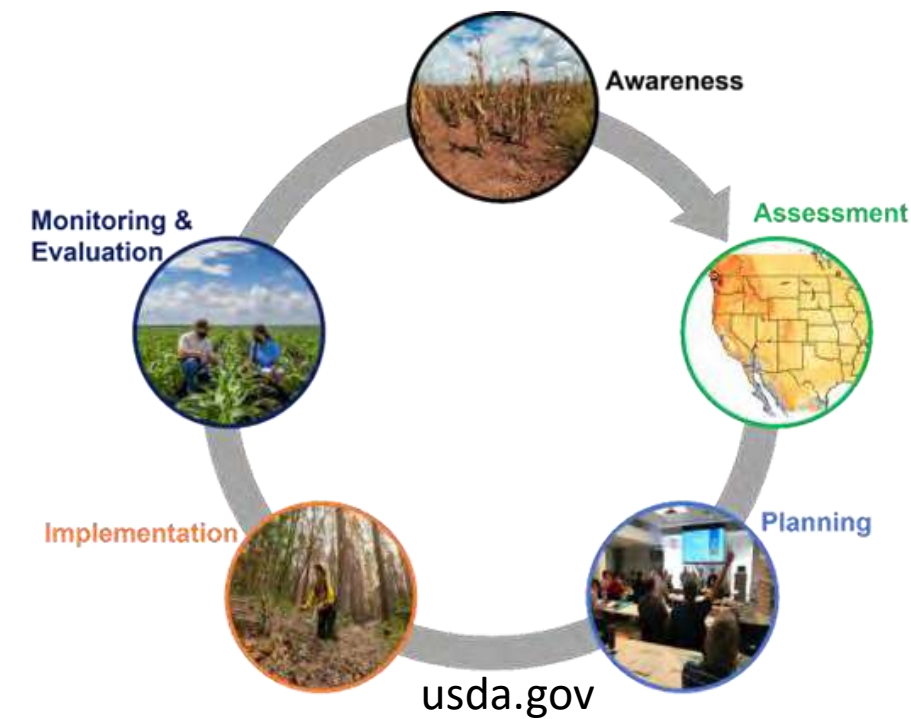
Updated September 2021





## What is means for the South African sugarcane sector

- Increase mitigation as agriculture is a major source of greenhouse gas emissions and to meet developing policy requirements (e.g. increasing Carbon Taxes R/ton of CO<sub>2</sub>e, Carbon Budgets, Carbon Taxes imposed on exports, etc.).
- Increase adaptation due to agriculture being highly affected by extreme weather events and natural disasters.
- Increased opportunities for diversification through prospective sugarcane-based green initiatives (carbon offsets).





01

## Mitigation

02

## Adaptation

03

## Diversification

- Regional sugarcane growers have improved their farming practices over the years, implementing sustainable farming practices as developed by SASRI and the adoption of these practices is supported through SASRI extension.
- SASRI continues to breed and select drought, pest and disease-resistant sugarcane varieties as part of the sector's adaptation strategy.
- Milling companies are moving towards sustainability certification which calls for reduced emissions during the sugar production process.
- The industry has come together with government to investigate a variety of green sugarcane opportunities as part of the industry's sustainability strategy under the Master Plan. These opportunities would contribute to the region's emission reduction goals.
- There is still an opportunity for growth.





SOUTH AFRICAN SUGARCANE  
RESEARCH INSTITUTE

Unlocking the potential of Sugarcane

# SUSFARMS<sup>®</sup>

Sustainable Sugarcane  
Farm Management System

4th Edition

February 2019



All copyright and other intellectual property rights subsisting in this tool, including without limitation all text, images and graphics contained in this tool (collectively, the "Contents") are owned by the South African Sugar Association ("the Owner"). Neither this tool nor any of its Contents may be shared, modified or copied in whole or part in any form, or be used to create any derivative work without the owner's prior written permission. Whilst every effort has been made to ensure that the information contained in this tool is accurate, the owner makes no representation, warranty or guarantee relating to the use of this tool. The use of this tool is at your own risk. The entire risk arising out of your use of this tool remains with you, and neither the Owner nor its consultants or staff can be held liable for any loss or damage, whether direct or indirect, caused by any data, information, record or results available on, obtained through or resulting from the use of this tool or caused by the reliance on the information contained in this tool. The use of proprietary names should not be considered as an endorsement for their use.

The Sustainable Sugarcane Farm Management System is the South African sugar industry's compendium of better management practices..  
designed to help sugarcane farmers implement and monitor sustainable practices.





Relevant to the cane production portion of the value chain only



Allows farmers to conduct a self-assessment of their farming operation against best practice



Allows a farmer to track his progress over time



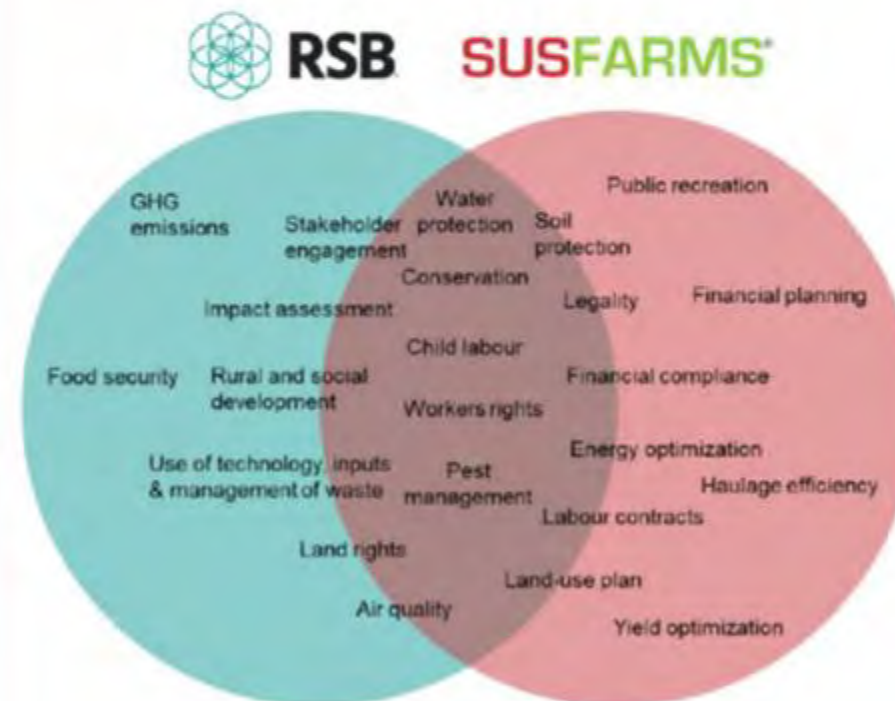
It is a continuous improvement farm management system



# BENCHMARKING & ALIGNMENT WITH CERTIFICATION SCHEMES



Achieved in 2018



Roundtable for Sustainable Biomaterials



Gold equivalence against the Farm Sustainability Assessment



CERTIFICATION

SUSFARMS

